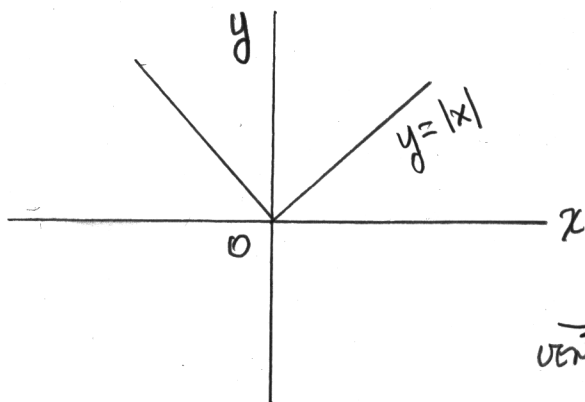


Name: ANSWER KEY

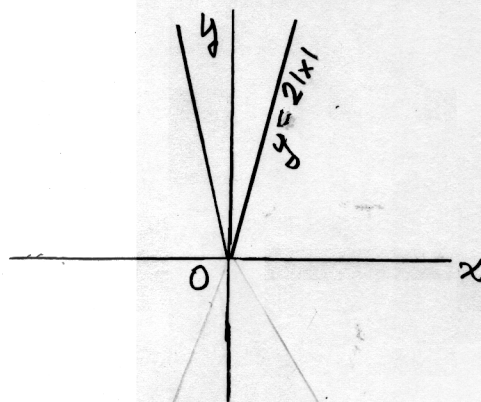
Score: \_\_\_\_\_

Draw the graph of  $f(x) = -2|x| + 4$ . Begin with a basic shape, then use two intermediate steps to final graph.



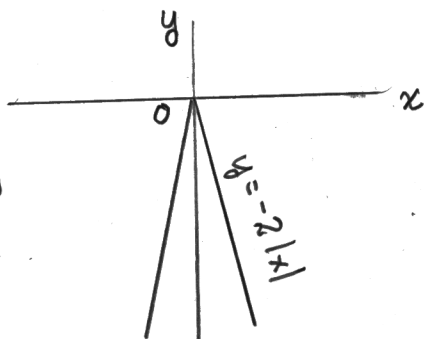
$y = |x|$   
Basic Shape

Stretch  
vertically by factor  
of 2



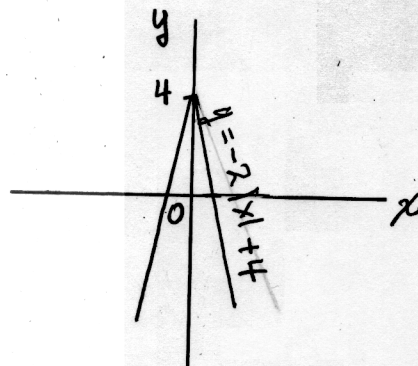
$y = 2|x|$

Reflect  
about x-axis



$y = -2|x|$

Shift up  
4 units



$y = -2|x| + 4$