



# THE INTERIOR

FOR SAGINAW VALLEY STATE UNIVERSITY EMPLOYEES. CALL INFORMATION SERVICES AT 790-4055 WITH NEWS ITEMS

April 6, 1993

## Outstanding Faculty, Staff and Community Leaders Honored for Service and Achievement at SVSU Banquet

Thomas H. Mutton and Stuart D. Gross joined the list of SVSU Distinguished Service Medallion recipients Saturday evening at the Fourth Annual All-University Awards Banquet in the Arbury Fine Arts Center. The award recognizes community leaders who have demonstrated exemplary service to the University and their communities.

Mutton is Senior Loan Officer, Northeast Region, Great Lakes Bancorp, and has been active in leadership positions with a number of voluntary community service organizations. He has served as president of the Downtown Lions Club of Saginaw and president of Positive Results in Downtown Environment (PRIDE), Inc. With the University, he serves as chairman of the Annual Fund Committee of the SVSU Foundation and president of the Foundation Board of Directors. He and his wife, Connie, live in Bay City.

A former city editor with *The Saginaw News*, Gross is retired after a long and distinguished career as a journalist, educator and assistant to the president of SVSU. The author of seven books and two plays about Saginaw's early lumbering era, Gross devotes much of his time to free-lance writing and community service, including participation as a lecturer with other volunteers who present the Saginaw Humanities Series, sponsored by SVSU. He is an active member of the Board of Fellows. He and his wife, Vernice, live in Saginaw.

A number of faculty and staff members also were recognized for outstanding achievement and dedicated service during the banquet.

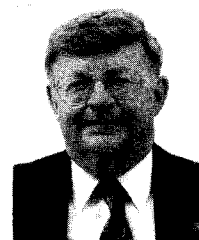
Heading the list of faculty honorees was Dr. Rosalie Riegle Troester, professor of English, who was selected to receive the prestigious Franc A. Landee Award for Excellence in Teaching. The Earl L. Warrick Award for

Excellence in Research went to Dr. Gail E. Kantak, associate professor of biology, and The House Family Award for Teacher Impact was awarded to Dr. Thomas J. Renna, professor of history. Each recipient received a \$1,000 cash award and a plaque commemorating the occasion.

Troester is former chairperson of the Honors Program, a position she twice held in 1985-87 and 1988-92. A magna cum laude graduate in business administration from St. Mary's College in Notre Dame (IN) she earned a master's degree from Wayne State University and was awarded a Ph.D. from the University of Michigan in 1983. She is a member of several professional organizations, has received numerous honors, awards and grants, has edited and written books and scholarly publications and delivered a number of scholarly papers. She has been a member of the SVSU faculty since 1969. She and her husband, Edmund, live in Saginaw.

For the past several years, Kantak has conducted extensive research throughout the Saginaw Bay watershed area. She has studied birds and plants in Bay County's Tobico Marsh, conducted research along the Saginaw River for the U.S. Environmental Protection Agency and researched the impact of Zebra Mussels for the Michigan Department of Natural Resources. Before coming to SVSU, she conducted zoological and botanical research in the Niobrara River Valley, on the Yucatan Peninsula of Mexico, in Wyoming's Grand Teton National Park, along the Atlantic Ocean's continental shelf off America's east coast, on Apostle Island in Lake Superior and in Australia and New Zealand. She earned a bachelor of science degree from Michigan

(Please see 'Awards Banquet,' page 2)



Thomas H. Mutton



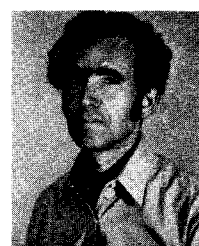
Stuart D. Gross



Rosalie R. Troester



Gail E. Kantak



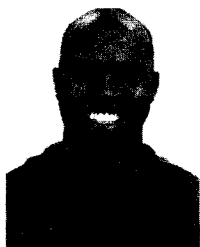
Thomas J. Renna

## Awards Banquet

(Continued from page 1)



Rachel L. Jersevic



Raymond Foster



Terry Ishihara

State University, and was awarded master's and Ph.D. degrees in zoology from the University of Wisconsin-Madison. She has been a member of the SVSU faculty since 1984 and lives in Midland.

"He showed me his excellence in presenting the great ideas that make up historical fact, the religious roots that secure societies, or the art that expresses new directions or old values," a student wrote nominating Renna for the award. A former recipient of the University's Landee and Warrick Awards, and recipient of the Michigan Academy Award for Excellence in Research, Renna has authored two books, 40 scholarly papers and has presented 80 papers at historical conferences in the U.S. and Europe. He earned his bachelor's degree, magna cum laude in honors, from the University of Scranton. He holds a master's degree from the University of Nebraska and a Ph.D. from Brown University. He has been a member of the SVSU faculty since 1970. He and his wife, Pamela, live in Saginaw Township.

Two new awards were added to this year's presentations. The Ruben Daniels Community Service Award, SVSU's highest recognition of community service and involvement, was presented to Rachel L. Jersevicz, administrative secretary in the Foundation Office. The award, sponsored by Michigan National Bank, includes \$500 in cash and a plaque commemorating the occasion. The SVSU Award for Outstanding Co-curricular Involvement was presented jointly to Raymond Foster, science and engineering coordinator/assistant testing laboratory supervisor and Dr. Teruro (Terry) Ishihara, professor of mechanical engineering and technology. Each received a plaque and a non-cash award.

Jersevicz, the first recipient of this award,

is recognized for her long commitment to community service, including that as general chairperson of the annual "Love-A-Fair," an activity which for more than 20 years has raised money for citizens with mental retardation. The holder of a degree as a legal secretary from the Saginaw Business Institute, she has served as secretary of the Saginaw Jaycees local raft race, a volunteer for the Haunted House and for the Muscular Dystrophy Telethon. She is past president of the Home and School Association of St. Casimir's Church, the Knights of Lithuania, Pulaski Club Women's Auxiliary, Sons of Italy and is a volunteer for the group working to restore the Potter Street Train Station. A native of Saginaw, she has been with the University since 1986.

As the University's Science and Engineering Outreach Coordinator, Foster is credited with establishing the University's "GET-SET" program, which encourages minority students in junior and senior high schools to select careers in science and engineering. To that end, he developed several workshops during the week and weekends, employing SVSU students to serve as mentors and teachers for the younger students. As assistant supervisor of the Independent Testing Laboratory, he has worked to provide hands-on experience for SVSU students confronting real world problems in private business. A Saginaw resident, he has been with the University since 1991.

Ishihara is described as "an excellent instructor" and a "professional role model" whose counsel is sought by students. "His example is one of complete participation in SVSU out-of-class activities both on campus and in the community." Chairman of the Mechanical Engineering and Technology Department, he serves as faculty advisor to Pi Tau Sigma honorary society, Alpha Phi Omega service fraternity and on a long list of other University committees and organizations. Holder of a Ph.D. from the University of Arizona, Ishihara is a former Landee Excellence in Teaching Award winner. He lives in Saginaw with his wife, Simi, and has been an SVSU faculty member since 1980.

Dr. Ellen Curtis-Pierce, dean of the College of Education, was Mistress of Ceremonies for the event, which also recognized 26 faculty and staff members for 10 to 25 years of dedicated service to the University.

All members of the campus community are invited to a luncheon honoring secretarial/clerical staff during National Secretaries Week (April 19-23).

**MONDAY, APRIL 19 • 12 NOON**  
**RYDER CENTER DANCE STUDIO**

The cost of the luncheon is \$6.75 per person for non-secretarial staff. Reservations for this event are being accepted through April 12 in the Personnel Office. Phone ext. 4108 for more information.

## Join the Corporate Challenge Team

If competition and camaraderie are two of your favorite things, the 1993 Corporate Challenge may be right up your alley. The mission of the Challenge is to unite mid-Michigan businesses and their employees in the pursuit of good health, personal fitness and company spirit. Participants of varying interests and abilities volunteer for the Challenge, which will take place September 21-25.

This year, many of the events will take place on the SVSU campus. Events include volleyball, bike racing, basketball shoot, team cheer, banner construction, 5K run, 5K walk, bowling, 4x50 swim relay, crescendo swim, innertube relay, 400m track, obstacle course and a tug-of-war. Two teams of 30 members each will compete in the Challenge. To volunteer or for more information, contact Jo Peterson, ext. 4310; Beth Rusch, ext. 4250; or Marie Rabideau, ext. 4226.

## New Service Makes PACE Membership Cards Available to SVSU Personnel at Discount

As a service to employees, SVSU occasionally will make available office space for area businesses that wish to make special offers to the campus community.

The first company to participate in this option is PACE Membership Warehouse. SVSU employees and/or their spouses are eligible for a PACE Membership Card for only \$10 per year. The usual membership is \$25 per year. The PACE card will allow you to purchase items at the posted business prices and avoid a five percent surcharge paid by non-members.

**A PACE representative will be in the Alumni Lounge on Wednesday, April 7, from 8:30 a.m. to 1:30 p.m. and also on Thursday, April 15, from 1:30 to 6 p.m.**

To purchase a membership, you must show either an SVSU identification card, an SVSU business card or a pay stub. You also will need to provide a driver's license and

know your Social Security number. The PACE representative will answer any questions you may have and will sign you up for your \$10 yearly membership.

If it is not possible for you to attend either on-campus session, you still may purchase a discount card at the \$10 fee by going directly to PACE's membership desk as the Bay Road location and providing the information indicated above to verify your SVSU affiliation.

## Spring Concerts Open to Music Lovers

Upcoming concerts presented by the Department of Music are:

### SVSU Concert Band

*Wednesday, April 7, 7:30 p.m., Theatre*

The program will include various selections of traditional concert band literature. Among them will be two marches, songs from the movie *Dances With Wolves* and parts of Holst's "The Planets."

### Jazz Ensemble

*Thursday, April 8, 7:30 p.m., Theatre*

The Jazz Ensemble will perform Stan Kenton's "Peanut Vendor" and Glenn Miller's "Pennsylvania 6-5000," as well as Michigan composer John Moss's arrangement of "That September Feeling." A quartet composed of Jazz Ensemble members and guest artist Steve Frarey will play Miles Davis's "All Blues" and Thad Jones' "A Child Is Born."

### Flûte

*Wednesday, April 14, 7:30 p.m., Theatre*

The program will feature works by Hovhannes, Boismortier, Smetana, Kuhlau, Schumann and Rodgers. Ervin Monroe, principal flutist of the Detroit Symphony, will be the featured guest artist.

Complimentary tickets for all concerts are available upon request to SVSU faculty and staff by calling ext. 4159.

## ECONOMICS SOCIETY 14TH FORUM

**Tuesday  
April 6, 1993  
3:15 p.m.  
Ryder Center  
Rooms 256-257**

**Speaker:  
Carlos Cuadriello  
Consul of Mexico  
Minister of Foreign  
Affairs  
Detroit, MI**

**"North American  
Free Trade  
Agreement:  
The New Realities  
in Mexico"**

## Saginaw Bay Watershed Conference April 15-17 at SVSU

This three-day conference will provide a forum for dialog on the past, present and future water quality conditions of the Saginaw Bay Watershed. For brochures on each session, contact the Saginaw Bay National Watershed Initiative office at 791-7367.

## Across Campus

SVSU deeply regrets announcing the death of Robert Lintner, an SVSU student from Mayville. The University will hold a Memorial Service for Lintner on Tuesday, April 6 at 4 p.m. in Lower Level Doan Center. Persons considering an expression of sympathy may wish to make a memorial contribution to Millington Church of the Nazarene, or their favorite charity, in Robert's name. The address for the church is 8700 State Street (M-15), Millington, MI 48746.

## Personnel

The following positions will be open to all regular employees of the University:

### Administrative Secretary

Office of Marketing Research/Information Services and Public Information (Posted 3/25/93) Full-time (replacement) position. Grade Level 4, rate of pay \$8.13/hr. Strong language and communication skills required; experience in proofreading desirable, accounting/bookkeeping background helpful.

### Instructor

College of Nursing and Allied Health Sciences (Posted 3/31/93) Full-time, tenure-track (replacement) position. Available fall 1993 semester. Salary negotiable.

For further information, contact the Personnel Office at ext. 4112. SVSU is an equal opportunity/affirmative action employer.

## Professional Profile

• **Judith Kerman**, dean of Arts and Behavioral Sciences, has received Special Mention in the 1993 "Oxalis" Poetry Competition for her poem, "Geographies." The poem will be published in issue 20 of *Oxalis* magazine, Kingston (NY).

• **Hideki Kihata**, associate professor of art, will be exhibiting two works titled "Vodka" and "Coat Hanger With Hand" in the exhibition *In The Spirit Of Jefferson*, at the Muscarelle Museum of Art, College of William and Mary in Williamsburg (VA). Former Chief Supreme Court Justice Warren Burger was the juror of the show.

• **Steve Lawrence**, assistant professor of chemistry, presented a seminar March 5 titled "Electronic Structure of Alumina Supported Nickel-Copper Catalysts" at the Second Annual Catalysis and Surface Science Secretariat held at the University of Texas at Austin. Lawrence's student research associate at SVSU, Al Gwizdala, was acknowledged for his technical assistance. Lawrence also was the principal author of an applications article published in the *Journal of Chemical Education* (1993, 70, 61).

• **The Valley Wind Quintet** performed live on WUCX 90.1 FM radio on March 31 as part of Delta Broadcasting Public Radio's fundraiser.

## Did You Know? ...

• Faculty and staff may bestow the **Alumni Scroll** to graduating members of their immediate family during Commencement on May 8. Call Mary Jane Craves at ext. 4030 to make arrangements.

• Children of University employees will be given a \$15 discount on **Summer Sports Camps**. More information and registration forms are available by calling ext. 7300.

• Among the nearly 50 new videotapes in Zahnaw Library Audio/Visual Services is *The Rodney King Case: What the Jury Saw in California v. Powell*. The documentary covers the original King trial in L.A., including complete footage from the amateur tape. Also available for faculty and staff use are recent compact disc purchases featuring many classical and jazz artists.

• **Academic regalia** for Commencement may be picked up at the Bookstore on or after Monday, April 12.

• **Portraits** for the 1993-94 *Faculty/Staff Directory* will be taken through the end of April. To schedule an appointment, call ext. 5641.

## Campus Happenings

### Voices in the Valley

*Wednesday, April 7, 7 p.m., Zahnaw Student Lounge*

Paulette Childress White, Poetry and Fiction.  
*Monday, April 12, 7 p.m., Lower Level Doan*  
Charles Baxter, Fiction.

### Senior Student Exhibition

*April 8-22, University Art Gallery*  
Group show of work by senior art students. Call ext. 4159 for Gallery hours.

### Savings Bonds Q&A Sessions

*Tuesday, April 13*  
8:30-9 a.m. in Wickes 3rd Floor Lunchroom  
9:15-9:45 a.m. in Brown 3rd Floor Lounge  
10-10:30 a.m. in Science Third Floor Lounge  
10:45-11:15 a.m. in Personnel Office  
Call Alice Cornejo in the Personnel Office at ext. 5669 for more information.

### Valley Film Society

*Friday, April 16, 8 p.m., Theatre*  
"Safety Last/Hot Water," a cracker-jack silent comedy about Harold Lloyd, who is determined to make good in the big city.



# BOARD REPORT

*A REPORT OF THE SAGINAW VALLEY STATE UNIVERSITY BOARD OF CONTROL*

March 29, 1993

## **Control Board Approves Doan Center Expansion, Promotes Eleven Faculty Members and Increases 1993-94 Room and Board Rates**

The Board of Control gave preliminary approval to plans for expansion of the Leland L. Doan Center, thus setting the stage to join one of the University's first permanent structures with the proposed Business and Professional Development Center on the west side of the main campus quadrangle.

The \$5.5 million Doan Center expansion will add an additional 16,180 square feet to the north side of the existing 28,500 square foot building, originally constructed in 1969 at a cost of \$1.3 million.

By approving the sale of general revenue bonds to finance the project during its regular meeting Monday, March 29, the Board gave the go-ahead for the University to modernize the building's kitchen facilities, create more open food service areas, relocate the Campus Bookstore in a 6,200 square foot space inside the renovated building and provide additional parking on the campus. The bookstore is presently housed in a nearby modular structure.

SVSU Controller James Muladore said financing for the project will be included in a \$9 million bond sale, which will refinance existing debt at more favorable interest rates. SVSU's current \$3 million bonded indebtedness stems from a 1987 sale that refinanced residence halls and provided construction of Pine Grove Apartments.

University President Eric Gilbertson said plans call for the new bonds to be marketed in time to enable ground to be broken for the project this summer.

The expansion will physically connect Doan Center with the new \$33 million Business and Professional Development Center for which architectural drawing and engineering specifications are being developed. Financing for the project was approved by the state last

year and construction is expected to begin later this year.

When complete, the new 217,000 square foot structure will be the largest on campus, housing a 600-seat performing arts auditorium complex, a 400-seat recital hall, multi-purpose classrooms and computer laboratory space, a three-story, glass-enclosed, reception/student lounge area, multimedia technical facilities, office space for faculty and staff of the College of Business and Management and similar office space for student leadership activities, volunteer services and the University Conference Center.

Because Parking Lot "C" will be eliminated to make room for the Doan Center expansion and construction of the Business and Professional Development Center, plans call for additional parking area to be added to Lots "B" and "J" located off Fox Drive south and west of Doan Center.

The Board also approved promotions for 11 faculty members. The promotions, which recognize "excellence in teaching and support faculty research and scholarly activity," take effect July 1, 1993.

Promoted to full Professor are:

**Louis E. Cohen, Jr.**, Professor of Psychology, College of Arts and Behavioral Sciences, holds a Ph.D. from Texas Tech University. He has done extensive research in the field of neuro-psychology, including study of fetal alcohol syndrome and the effect of drug abuse on babies during pregnancy. Sensitive to the use of laboratory animals in research, he chairs SVSU's institutional research board. He has been an SVSU faculty member since 1984.

(Continued on reverse side)

**George A. Corser**, Professor of Mechanical Engineering, College of Science, Engineering and Technology, holds a Master's Degree in civil engineering from Washington State University. He was named an outstanding instructor at GMI where he taught for 16 years before joining the SVSU faculty in 1981. He was named "Engineer of the Year" by the Flint Chapter of the Michigan Society for Professional Engineers and holds patents for three inventions. He currently serves as President of the SVSU Faculty Association.

**Sally A. Decker**, Professor of Nursing, College of Nursing and Applied Health Sciences, holds a Ph. D. in nursing from the University of Michigan. A former U.S. Army nurse, she has published and presented a number of scholarly papers and, in 1992, was the recipient of SVSU's Earl Warrick Award for Excellence in Research. She has been with the University since 1980.

**Margaret M. Flatt**, Professor of Nursing, College of Nursing and Applied Health Sciences, holds a Ph.D. in human ecology from Michigan State University. An Army nurse during the Vietnam War, where she won an army commendation medal, she is active in veteran's affairs both on and off-campus and chairs a self-study subcommittee for the North Central Association reaccreditation review. She has served as a consultant and presented a number of scholarly papers. She has been with SVSU since 1976.

**Judith Hill**, Professor of Philosophy, Department of Arts and Behavioral Sciences, holds a Ph.D. in philosophy from the University of North Carolina. A former Assistant Professor at George Mason University, she has published scholarly studies on a variety of topics including "The University and Industrial Research, Pornography and Degradation" and "Pay Equity." She has been a member of the SVSU faculty since 1988.

**Gail E. Kantak**, Professor of Biology, College of Science, Engineering and Technology, holds a Ph.D. in zoology from the University of Wisconsin-Madison. She has conducted extensive research throughout the Saginaw Bay watershed area including the study of birds and plants in Bay County's Tobico Marsh, conducted research along the Saginaw River for the U.S. Environmental Protection Agency, and researched the impact

of Zebra Mussels for the Michigan Department of Natural Resources. She has been a member of the SVSU faculty since 1984.

**James Sullivan**, Professor of English, College of Arts and Behavioral Sciences, holds a Ph.D. in linguistics from Yeshiva University. He is a two-time fellowship recipient from the National Endowment for the Humanities at Columbia University and Dartmouth College, a social science research fellow at Yeshiva University and a Scholar's Award winner at Boston University. His publications include "Folk and Baroque, The Turn of Comic Prose" and "The Validity of Literary Dialect," among others. He has been a University faculty member since 1987.

Promoted to Associate Professor are:

**Jonathan P. Leonard**, Associate Professor of Electrical Engineering in the College of Science, Engineering and Technology, holds a Ph.D. in bioengineering from the University of Pennsylvania. His professional background includes work as an electron microscope technician in the Department of Anatomy, School of Medicine at the State University of New York at Buffalo and with the Department of Zoology at the University of Maine. He has published a number of scholarly papers and made presentations on several topics. He has been an SVSU faculty member since 1989.

**Tirumale K. Ramesh**, Associate Professor of Electrical Engineering in the College of Science, Engineering and Technology, holds a Master's Degree in electrical engineering from Mississippi State University and is pursuing a Ph.D. at Oakland University in computer architecture. A native of India, he has served as a consultant with the Advanced Engineering Group for the Saginaw Division of General Motors Corp. He has been a member of the SVSU faculty since 1984.

**Surender C. Reddy**, Associate Professor of Management, College of Business and Management, holds a Ph.D. from Case Western Reserve University. She has been with the University since 1984.

**Carrie Sorensen**, Associate Professor of Teacher Education, College of Education, holds a E.D. from the University of Nebraska. She has been a member of the SVSU faculty since 1989.

(Continued on Board Report page 3)

(Continued from Board Report page 2)

The Board approved the promotions based upon recommendations of University Departments and an Evaluation Team using criteria that measure the candidates' teaching performance, scholarly activities—including publishing, developing or conducting workshops, research and community service—service to the University and leadership in student activities. The promotion process follows procedures established by a contractual agreement between the University and the SVSU Faculty Association.

In other action, the Board approved increases of about 3.25 percent for room and board for the 1993-94 academic year. Students in double occupancy rooms who take 21 meals a week will pay \$3,640 for the 1993-94 aca-

demic year. Those under a 15 meal/week plan will pay \$3,540 and those taking 14 meals will pay \$3,590. About 465 students lived and took meals on campus this year.

Families living in Pine Grove Apartments will see a \$10 monthly rental increase to \$440. All increases under various housing and meals programs take effect August 23, 1993.

During the 1992-93 academic year, SVSU's combined room and board rate ranked as the least costly among Michigan's 12 state-supported universities offering housing programs. Data compiled by the Presidents Council of State Universities of Michigan, showed SVSU's rate was \$63 less than that of Michigan State University and \$750 less than the University of Michigan at Ann Arbor. Room and board rates of other state universities ranked between those figures.

This is an unofficial report of  
Board activities. Official minutes  
are on file in the library.



**AWARD HIGHLIGHTS RECEPTION** — Friends and former colleagues surprised Rose Collamer [left] at a March 24 reception for graduating women. Rosalie Riegle Troester [at podium] and Norma Gase Zivich [right] present Collamer with the Women's History Month award for outstanding service to women students. Collamer, herself an SVSU alumna, worked tirelessly on behalf of non-traditional students, particularly in her role as founder and director of the Chrysallis Center. She also taught in the English department for many years, retiring as associate professor.



**COMPARING HEALTH CARE SYSTEMS** — Twenty-four B.S.N. students and two faculty from the Japanese Red Cross College of Nursing (JRCN) in Tokyo visited SVSU March 25-29 before traveling to Madonna and Wayne State Universities for additional exchanges. Associate Professor of Nursing Sachiko Claus served as interpreter throughout the week. SVSU nursing students and faculty [above] gathered with the Japanese guests to hear a presentation on Japan's nursing education and its health care system by Dr. Fumiaki Inaoko, professor of nursing at JRCN.

# A Special Thanks for help with the



**1993**

## A Special Thanks for help with the Valley Festival of the Fine Arts:

### Valley Festival of the Fine Arts Planning Committee

Diane Brimmer, Chairperson  
Jean Chesney  
Alice Cornejo  
Susan Foss  
Marilyn Frahm  
Gayle Koehler  
Kim McDonald  
Michael Panhorst  
Kathy Pelkki  
Shaza Rehman  
Janet Rubin  
Suzanne Straebel  
Bill Wollner

### Campus Life Team Members

Diane Brimmer, Team Leader  
Penny Bailey  
John Curry  
Cassandra Bailey Ealy  
Ann Garcia  
Terry Ishihara  
Michael Panhorst  
Fred Porterfield  
Christina Power  
Janet Rubin  
Merry Jo Starnine  
Dan Strasz  
Jennifer Turner  
Joe Vogl  
Doug Wagener  
Bill Wollner

### Performing Groups

Clarinet Quintet  
Collecting Consort  
Collegium Musicum  
Flutee  
Hugg E. Bear  
Joyful Noise  
Kidtricity  
Latent Image  
McGruff & Clowns  
Ronald McDonald  
Saginaw Art Museum  
Third Wednesday Poetry  
Workshop  
Valley String Ensemble  
Valley Wind Quintet

### SVSU Offices

Children's Center  
Communication & Theatre  
Department  
Conference Bureau  
Dining Services  
Information Services  
Mailroom and Graphics  
Physical Plant  
Public Information  
Public Safety  
Ryder Center  
Student Life

### Sponsors

Michigan Council for the Arts &  
Cultural Affairs  
Saginaw Community Foundation  
Saginaw News  
Target Stores  
SVSU Campus Life Team  
SVSU Office of the Dean of  
Arts & Behavioral Sciences  
SVSU Office of the Dean of  
Student Affairs  
SVSU Office of Student Life  
SVSU Office of the Vice  
President of Academic  
Affairs  
SVSU Student Government

### Donors

Cooper's Frame & Art  
Educator's Warehouse  
Fabri Centers of America  
Leaman's Green Applebarn  
Meijer's  
Northeastern Paint Supply  
Saginaw Mercy Ambulance  
Wal Mart

### Artists, Performers and Volunteers

Barb Abeare  
Karen Agans  
Donna Alward  
Gary Apsey  
Joseph Ashcraft  
Karen Avila  
Jennifer Bailey  
Terry Basmajian  
Jamie Bateson  
Jeff Behm  
Barbra Belill  
Denise Bellinger

Joanne Best  
Bruce Bever  
Geraldine Blackney  
Deanna Bokoski  
Chuck Bolter  
Marilyn Boyd  
Chris Brennan  
Charles Brown  
Jean Brown  
Margaret Brown  
Shirlene Brown  
Sue Browning  
Naomi Burke  
Emmie Busch  
Sarah Chilton  
Sara Clark  
Rose Connelly  
Jeannine Coughlin  
John Curry  
Krista Denkers  
Sara Desmarais  
Tom Dodak  
Sue Dougherty  
Cassandra Bailey Ealy  
Cara Eastland  
Loukia Economou  
Tina Enbody  
Marybeth Enciso  
Debra Erickson  
Steve Erickson  
Laura Espinoza  
Judy Estabrook  
David Estrada  
Jim Evans  
Mike Fahkih  
Mary Fedderson  
Rachel Fein  
Elaine Fentress  
Mollie Ferguson  
MaryAnn Finch  
Elizabeth Fiske  
Judy Foss  
Julia Foss  
Jeana Fryer  
Brian Gano  
Ann Garcia  
Ricardo Garza  
Jim Geistman  
Jim Gibbs  
Rob Gordon  
Laurie Gregory  
Michelle Gunkelman  
Jeff Hall  
Gloria Hansen  
Herb Hansen

Mike Hart  
Becky Hatton  
Andre Heidenberger  
Shauna Hemphill  
Marie Hendrick  
Malissa Hesse  
Craig Hierholzer  
Barron Hirsch  
Joe Holiday  
Heather Holik  
Tim Inman  
Rachel Jersevicz  
Dolly Johnson  
Virginia Johnston  
Ruth Juhala  
Sharon Kazmierski  
Shelly Kenny  
Judy Kerman  
Hideki Kihata  
Michael Kish  
Nancy Klenk  
Nan Klump  
Todd Kochanski  
Dona Kocher  
Stephanie Kopec  
Chrissy Kreiner  
Jan Kuebler  
Laura Lambert  
Amanda Lambert  
Bryan Latimer  
Bev Layer  
Major Leckie  
Brenda Lee  
Renee Lee  
Sue Leonard  
Dave Lewis  
Clyde Liederman  
Becky Liepprandt  
Sana Lindsay  
Kayla Linton  
David Littell  
Steve Locke  
Susanne Loeschner  
Rosita Lugo  
Jan Lyddon  
Joyce MacGregor  
Vicky Mahoney  
Pam Malone  
Keleen Marciniak  
Archie Martell  
David McAvey  
Kelly McCabe  
Sandra McGuinn  
Arnold Melnick  
Julie Meyers

Patricia Morris  
 Karen Mudge  
 Helen Murin  
 Bill Murray  
 Lori Natale  
 Bill Neal  
 Nancy Neal  
 Gilbert Neri  
 Greg Newland  
 Kathy Nowaczyk  
 Pamela Oakes  
 Steve Panich  
 Todd Pashak  
 Tim Patricio  
 Barbara Payne  
 Richard Payne  
 Angie Pearson  
 Marlene Pellerito  
 Jo Pelkki  
 Marsha Porath  
 Kristina Porteous  
 Bill Portman  
 Jodi Preston  
 Tonya Pritchett  
 Tom Provoast  
 Danielle Rahn  
 Carlos Ramet  
 David Rayfield  
 Alison Reed  
 Dawn Reed  
 Alan Reisinger  
 Jaye Reisinger  
 Rhonda Richardson  
 Neil Richey  
 Darryl Robbins  
 Barbara Roberts  
 Marcy Roggenbuck  
 Robert Rokita  
 Beth Rusch  
 Cheryl Saffarian  
 Kristina Salcedo  
 Mary Kay Schaeffer  
 Bill Schafer  
 Donna Schantz  
 Greg Schneider  
 Elaine Schnepf  
 Stephanie Schoenhals  
 Elizabeth Sheehan  
 Marcie Shumaker  
 Lori Skare  
 Jenny Skerin  
 Marty Skrelunas  
 Callie Smith  
 Craig Snook  
 Carrie Sorenson  
 Tonya Spraggins  
 Merry Jo Starrine  
 Brent Steffen  
 Tom Stockwell  
 Dan Strasz  
 Sue Suing  
 Val Taylor  
 Beth Teliczan  
 Kathleen Theiler  
 Connie Thomas  
 Debra Thomas  
 Dick Thompson

Angie Torrez  
 Jennifer Turner  
 Amy Vennix  
 Joe Vogl  
 Kim Burkland-Ward  
 Biff Ward  
 Deanna Wegner  
 Sue Welke  
 Nancy Whalen  
 Wendy Wheeler  
 Fay Wilder  
 LaraBeth Wise  
 Geoff Yaros  
 Alex Zarate  
 Missy Zinnecker  
 Matthew Zivich  
 Arlene Zoellner  
 Theresa Zukowski

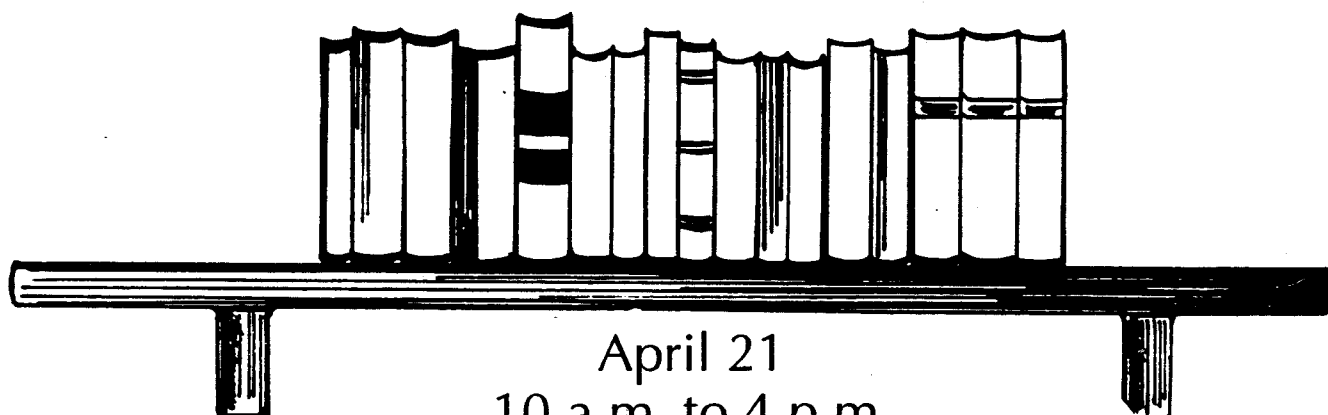
# **"Beauty & the Beast"**

Kathy Anderson  
 Tammi Arizola  
 Joe Ashcraft  
 Donald Ashmall  
 Shane Baranek  
 Raquel Beson  
 Kelly Bessinger  
 Mary Bieszkze  
 Michelle Boseley  
 Renee Bovee  
 Heather Bradford  
 Doug Burns  
 Joel Caverly  
 Monica Conger  
 Mark Constance  
 Leah DeRocco  
 Tracy Dohner  
 Jennifer Drayton  
 Cindy Dudock  
 Marsha Elsen  
 Debra Erickson  
 Steve Erickson  
 Paul Everson  
 Kathy Fehman  
 Kristine Ferrio  
 Brenda Frank  
 Andrea Furst  
 Mary Gombar  
 Susan Gravesteijn  
 Karla Gray  
 Alberto Gulino  
 Kathy Hart  
 Jill Hemann  
 Jennifer Henki  
 Sandra Heroux  
 Catherine Hickey  
 Tonia Hutson  
 Mari King  
 Deidre Kotch  
 Laurie Kottenhaus  
 Virginia Kurchak  
 Kami Layman  
 Christy Legg  
 Jennifer Licht  
 Christie Luptowski  
 Wendy Mawry  
 Jean McPhee

Kevin Mercer  
 Trischa Mietz  
 Max Miller  
 Dennis Miller  
 Brenda Minnick  
 Diane Mitchell  
 Dion Monisse  
 Lois Morrell  
 Joe Ann Nash  
 Kristan Newcomb  
 Erika Perez  
 Patti Pettit  
 Kellie Powell  
 Lori Pretzer  
 Stacy Reavey  
 Chelsea Reese  
 Janet Rubin  
 Terri Schuch  
 Michelle Shell  
 Sara Simpson  
 James Spradlin  
 Leonard Stampfey  
 Brent Steffen  
 Justin Streeter  
 Ken Tessin  
 Tammie Todd  
 Kenna Troutman  
 Doug Wagener  
 John Weis  
 Cheryl West  
 Virgie Wilson  
 Cindy Wright  
 Shelly Yovanov



# **BOOK SALE** at the **LIBRARY**



April 21  
10 a.m. to 4 p.m.  
second floor walkway  
outside the Melvin J. Zahnow Library  
Prices: 75¢ per paperback  
\$1.50 per hardcover

## **Choose from:**

education	history
general fiction	literature
reference materials	popular fiction
phil./psych.	and many more!

**Sponsored by:**  
**Melvin J. Zahnow Library**  
**Saginaw Valley State University**  
**(517) 790-4245**