



# THE INTERIOR

FOR SAGINAW VALLEY STATE UNIVERSITY EMPLOYEES. CALL INFORMATION SERVICES AT 790-4055 WITH NEWS ITEMS

January 15, 1991

## Plaques Recognize University Founders, Leaders

Three campus buildings display wall-mounted bronze plaques recognizing University founders and leaders for whom the facilities are named. The plates were placed last week, according to Executive Director of Development and the SVSU Foundation Albert J. Beutler.

The plaques appear in two of the oldest buildings on campus — Doan Center and Wickes Hall — and the newest campus addition, the Ryder Center for Health and Physical Education.

The Doan Center plaque honors Leland I. Doan, for whom the building is named. "Lee" Doan served as president of The Dow Chemical Company from 1949 until 1962, leading a period of rapid growth in the firm's history. Doan was among the community leaders who were instrumental in establishing Saginaw Valley College in the 1960s, contributing both time and money to the effort.

Harvey Randall Wickes assumed presidency of the companies forming the Wickes Corporation in 1941 and served in that capacity until 1964. To promote his philanthropic interests, he established the Harvey Randall Wickes Foundation in 1946, dedicating its resources to "scientific, educational and charitable" projects. Upon his death, the bulk of his estate was transferred to the foundation.

Through the foundation, Wickes contributed \$1 million toward the original building fund for then-SVC. In subsequent years, foundation funds have supported various other University projects, including grants to the library,

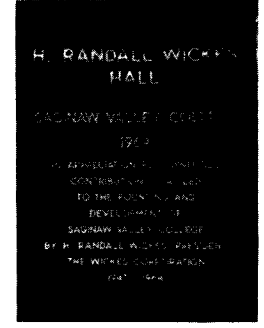
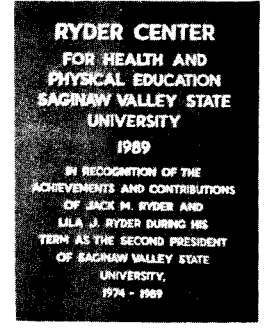
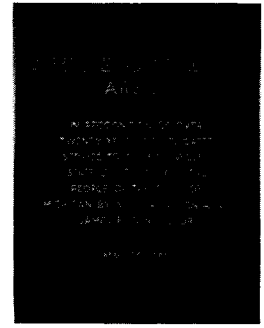
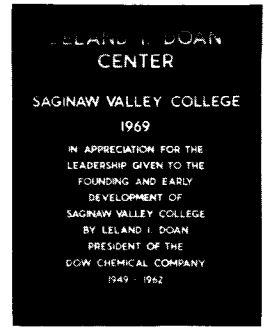
the Valley Library Consortium and the Pioneer Hall of Engineering and Technology. The naming of Wickes Hall recognizes Wickes' efforts in the founding of the University.

Permanent plaques in the Ryder Center replace the temporary recognition boards placed there when the building opened and when O'Neill arena was dedicated in 1989. The Ryder plate recognizes "the achievements and contributions of Jack M. Ryder and Lila J. Ryder during his term as the second president of SVSU."

State Representative James E. O'Neill Jr.'s 20-plus years of dedicated service to SVSU and Michigan's citizens is recognized on the bronze plate carrying his name.

Completing the engraved recognitions is a plaque noting the years of service of the University's first president, Dr. Samuel D. Marble. The plate is located near the Marble bas relief outside the entrance to Marble Lecture Hall on the first floor of Wickes Hall.

With the addition of these plaques, all major campus buildings will have plates identifying founders and leaders for whom the facilities are named. Other markers appear in the Arbury Fine Arts Center, Melvin E. Brown Hall, the Pioneer Hall of Engineering and Technology and the Melvin J. Zahnnow Library.



### WAYNE COUNTY ATTORNEY APPOINTED TO BOARD OF CONTROL

Wayne County lawyer Nancy G. Edmunds has been appointed to the SVSU Board of Control. Her appointment, effective immediately, was announced by Governor John M. Engler January 2.

Edmunds graduated cum laude from Cornell University, Ithaca, NY. She holds a Master of Arts in Teaching from the University of Chicago and graduated first in her class with a J.D. from Wayne Law School, WSU.

Edmunds is a partner in the Detroit law firm Dykema Gossett. Earlier in her career she served as law clerk to Ralph Freeman, U.S. District Court Judge, Eastern District of Michigan. She is a member of the American Bar Association and the State Bar of Michigan, as well as other bar associations.

She is the author of several published articles, and a member of the American

Israel Public Affairs Committee and the Jewish Welfare Federation/Allied Jewish Campaign.

Higher education always has concerned her, she indicated, and she welcomes the opportunity to serve on the SVSU board. She plans to spend her first weeks becoming acquainted with SVSU and will attend the annual board retreat Friday, Jan. 18 and Saturday, Jan. 19.

Edmunds replaces Florence F. "Jo" Saltzman, whose term expired July 21, 1989. Saltzman was appointed in 1974. She served as Board chairperson from 1987 to 1990 and was chair of the presidential search committee that recommended Dr. Eric Gilbertson be named SVSU's third president.

"We deeply appreciate all the years of service Mrs. Saltzman gave us," Gilbertson said.

### Open Forum Set

President Gilbertson will conduct an open forum for students from 4-5:30 p.m. Tuesday, Jan. 29 in Brown Concourse. Students are invited to share their concerns and suggestions.

### Groening, Marble Scholarships Accumulate Funds

SVSU students soon will be the beneficiaries of endowed scholarships that have received substantial private contributions.

The Virginia Groening Memorial Scholarship was established in honor of Virginia Groening following her death in August 1990. Mrs. Groening was a long-time resident of Midland where she was an active community citizen and devoted supporter of her husband, William A. Groening Jr., and their five children.

William Groening was a member of the original governing board of Saginaw Valley College when it was organized as a private institution in 1964. He was named to the SVC Board of Control when the college became part of the state system in 1966 and served until 1974. He was the board's first chairman and has continued to serve SVSU in many ways.

By December 31 more than \$18,000 had been contributed to the scholarship fund, according to Executive Director of the SVSU

Foundation Albert J. Beutler. The Foundation has set a \$25,000 goal for the endowment.

Grants from the endowment's earnings will be made to full- or part-time students who have demonstrated superior scholastic achievement and potential. Financial need also will be considered.

A second endowed scholarship will recognize first SVSU President Samuel D. Marble, who died in March 1990. The Board of Control at its June 11 meeting acted to memorialize Marble's contributions to SVSU. Among its actions was the establishment of the Samuel D. Marble Scholarship.

Designated for a transfer student from Delta College to SVSU, the scholarship will pay tribute to Dr. Marble's service to both institutions. After an initial mailing to approximately 175 individuals, more than \$8,500 has been received. The endowment has a minimum goal of \$10,000, Beutler said.

Contributions to either scholarship still are being accepted. Contact the Foundation office at ext. 4052 for more information.

## United Way Campaign Surpasses Goal

A total of \$15,996 in contributions and pledges by 173 SVSU employees has put SVSU over its 1990 goal. The donations also put the University effort well ahead of the 1989 total of \$12,628.

"The University and its people take their roles in the community seriously," said Dr. John Fallon, vice president for public affairs, who headed the SVSU effort. "This is just one in a long line of indications that attest to their concern."

## Nomination Sought for Distinguished Alumni Award

Nominations are being sought for the 1991 SVSU Distinguished Alumni Award to be presented at May Commencement ceremonies.

Recommendations for the annual award can be made by alumni, SVSU employees and the general public in recognition of contributions made to society and/or the chosen profession of an alumna or alumnus.

Criteria for the award, presented by the SVSU Alumni Association, include graduation from SVSU. Nominees should not be present members of the Alumni Association board of directors or past recipients of the award.

The 1990 award went to Dr. Raquel Ontiveros, who served as KCP Visiting Professor during the 1989-90 academic year. Currently she is interim director of the Bilingual/Bicultural Center.

Nomination forms can be obtained by contacting Norma Gase Zivich, coordinator of alumni relations, at ext. 4075. Nominations should be returned to the Alumni Relations Office no later than March 1.

## Blood Drive Set

Coordinator of Health Services Gloria Hansen asks you to start the new year right by contributing the gift of life. "SVSU is having its first blood drive for 1991 between 11 a.m. and 5 p.m. Thursday, Jan. 24," she notes. Prospective donors may come to Brown Concourse at any time during that period. For more infor-

mation on the program, call Health Services at ext. 4272.

## CPR Training Offered

A class to provide Red Cross certification in adult CPR will be conducted Saturday, Jan. 26. The three hour session, sponsored by the Non-Traditional Student Organization, begins at 9:30 a.m. in 226 Ryder Center. There is no cost to participants, but enrollment is limited. Please call Jean Chesney, director of the life-long resource center, at ext. 4267 to reserve a space.

## Reception Planned for Frankenmuth Alumni

SVSU graduates currently living in the Frankenmuth area will gather at Gepetto's Restaurant Monday, Jan. 21 for a 5:30-6:30 p.m. reception. According to Coordinator of Alumni Relations Norma Gase Zivich, the occasion is a first for the Frankenmuth alums.

They will meet President Eric Gilbertson and members of the SVSU Alumni Association board of directors, as well as getting acquainted with fellow SVSU grads. And one lucky participant will win a one-year membership in the Cardinal Club.

According to Zivich, the Frankenmuth reception probably is the third constituent event in SVSU history. Other receptions have been held in conjunction with off-campus meetings of the SVSU Board of Control. Zivich is planning a similar reception when the University governing board meets in Midland in March.

## Briefly Speaking

— **Auditions** for the winter semester production of *The Hobbit* take place in the SVSU Theatre from 4-7 p.m. Tuesday, Jan. 15 and 7-10 p.m. Thursday, Jan. 17. For information, call ext. 4019.

— **The Zahnow Lecture Series** features Dr. Phyllis Hastings on Wednesday, Jan. 16. She will present "General Education and Freshman Composition: The Writing Connection" at 12:30 p.m. in the Zahnow student lounge.

— **VHS** presents *Devil's Disciple* Friday, Jan. 18 in the SVSU Theatre. Show time is 8 p.m.

## Reception

The campus community is invited to a reception for the Latent Image Photo Competition II from 4-6 p.m. Wednesday, Jan. 16 at the University Art Gallery in Arbury Fine Arts Center.

The annual dinner celebrating Dr. Martin Luther King Jr. Day begins at 5 p.m. Tuesday, Jan. 15 in lower level Doan Center. Featured speaker is Dr. Melba Boyd, associate professor and director of African-American Studies at the University of Michigan-Flint. There is a \$4 charge for faculty and staff; students may attend free.

## Professional Profile

— Dr. Sally Edgerton, assistant professor of education, presented an inservice program for Saginaw Public Schools on November 29, 1990 in collaboration with Jane Hollingsworth, a Headstart coordinator with the Beecher Public Schools. The program, "Let It Snow," provided teachers with the theory and actual practice of integrating a primary grade curriculum. An integrated thematic curricular approach is in keeping with the position statement from the National Association for the Education of Young Children. Edgerton and Hollingsworth also are presenting the program for the 10th Annual Child Development Conference Developmental Curriculum for the Developing Child, Greater Flint Assn. for the Education of Young Children on Saturday, Jan. 19.

## New I.D. Cards Issued

New identification cards have been issued to SVSU employees. They may be used for discounted — and occasionally free — admission to most campus events and programs. The new cards are good for the remainder of the 1990-91 academic year and may be validated for subsequent years.

Employees are advised to retain current I.D. cards for library use until zebra codes are installed on the new cards. If you did not receive a card, or have questions about its use, call the Office of Campus Activities and Orientation at ext. 4170. Replacements for lost cards will be provided for \$5.

## High Five

— Senior Sue Breternitz was an automatic qualifier for the NCAA Division II national indoor track championships with her 45-6, first-place heave in the shot put at the Michigan Relays for Women at the University of Michigan Saturday. Sophomore Becky Duda was a provisional qualifier in the 3,000 meters with a 10:13.4 clocking.

-- SVSU hosts Ferris State University Friday in a men's and women's indoor track meet in O'Neill Arena. The dual meet marks the first home appearance of the season for the Cards.

-- Cardinal basketball teams open four-game home stands Thursday by hosting Michigan Tech University in a GLIAC double-header. The men snapped a three-game road losing streak with a 62-52 win at Wayne State University Saturday, raising their overall record to 8-5 and their GLIAC mark to 2-2.

The Lady Cardinals erased an 11-point deficit in a 68-61 win over Wayne State, snapping a four-game road losing streak. SVSU is 8-6 overall and 2-2 in the GLIAC.

## Children's Hour Continued

The success of the Saturday Morning Children's Hour, begun last semester to aid busy student-parents, resulted in extension of the program winter semester. Expanded hours are 10 a.m. to 1 p.m. Saturdays through April 20, excluding March 9. Call ext. 4170 for details.

### New Items in Central Stores

The following items have been added to Central Stores inventory and can be ordered by referencing the listed stock numbers:

#35	13-month Appointment Book Weekly - Desk	\$ 4.40
#36	13-month Appointment Book Weekly - Pocket	4.40
#243	Address labels for HP Laser Jet Printers Clear, 1 x 2 5/8" - 100 sheet box	22.29
#93	Toner Cartridge (can be used with HP III)	82.00
#95	Toner Cartridge (for use with HP IIP)	62.89
#444	WordPerfect 5.1 Binder w/inserts	24.00
#445	WordPerfect 5.1 Inserts only	14.00
#446	WordPerfect 5.1 Workbook	14.00

The 1991 issue of the Central Stores Catalog is being printed and will be distributed upon completion.