

the Interior

* DOW CORNING GRANT RECOGNIZES EXCELLENCE IN RESEARCH

* NURSING PROFESSOR TO SPEND YEAR IN JAPAN

For Saginaw Valley State College employees. Published by the Office of Information Services. Call 790-4054 with news items.

REFERENCE DEPARTMENT

June 10, 1986

SAGINAW VALLEY STATE COLLEGE LIBRARY

2250 PIERCE ROAD

UNIVERSITY CENTER, MICHIGAN 48710

DOW CORNING ESTABLISHES FACULTY AWARD

SVSC professors with significant research or scholarly accomplishments will be eligible for recognition and a cash award, thanks to a contribution from the Dow Corning Corporation.

Announcement of the \$20,000 endowment to fund the Earl L. Warrick Excellence in Research Award came at a June 4 luncheon hosted by Dow Corning. The award is named for Dr. Earl L. Warrick, a retired Dow Corning senior management consultant.

To be considered for the Warrick Award, SVSC faculty must have completed research or scholarly work of the highest quality over an extended period of time.

Selection of recipients will be by a committee including one academic administrator, the previous year's recipient of the award, a member of SVSC's Board of Fellows (an advisory body of community leaders), and individuals from the community who are prominent in various fields of research conducted at SVSC.

"We are most appreciative of the contribution from the Dow Corning Corporation that will fund this grant," commented President Ryder. "Through earnings from the endowment, we expect to provide a cash

award and plaque to each year's recipient of the Earl L. Warrick Excellence in Research Award. For the immediate future, the award will be \$750."

Warrick has a long and distinguished career in the field of polymer chemistry and silicone research. He is the holder or co-recipient of 44 U.S. patents. His published articles and scientific papers on polymer chemistry and silicone research include writings on silicone rubber.

In 1976 Warrick received rubber chemistry's highest honor, the Charles Goodyear medal and award. His basic research in silicone rubber led to the birth and growth of the silicone rubber industry.

Warrick earned bachelor, master and doctor of science degrees from Carnegie Institute of Technology. He taught at Carnegie, as well as Brown University and the University of Pittsburgh. He twice served as interim dean of SVSC's School of Science, Engineering and Technology, first in 1979-80 and again during the 1983-84 academic year. He continues to serve as special consultant to the vice president for academic affairs at SVSC.

Etceteras...

... "Corporations gave \$1.574 billion to colleges and universities in academic year 1984-85, up 23.8 percent over the prior year, making the business community the largest contributor of any donor group. Since 1979-80, corporate giving has grown by 126.1 percent, twice the rate of growth for all giving, and now accounts for nearly 25 percent of the institutions' private sector support."

... "The colleges and universities reporting matching gifts received \$99.4 million through this form of giving in 1984-85."

The CFAE Newsletter
Council for Financial Aid to Education

... Total voluntary support (for education) is estimated at \$6.32 billion in 1984-85. Corporations gave 25% of the total, more than any other group.

Source: Voluntary Support of Education 1984-85

... During 1985 SVSC received \$1,625,549 in voluntary cash contributions. Gifts from corporations and businesses, including matching grants, accounted for 23 percent of this total.

Source: SVSC 1985 Report of Annual Giving

GRAIVER TO SPEND YEAR IN JAPAN

Experiencing a different culture isn't new to Mary Graiver, but moving an entire family to a foreign country for the duration of a year will be a challenge.

Graiver, assistant professor of nursing, will travel to Japan this summer with her husband, Daniel, and their two children. The Graivers, including four-year-old David and 21-month-old Natalie, will leave their Midland home in July, 1986, to reside near Tokyo until September. Then they will move to Kyoto where Mr. Graiver will conduct research for the Dow Corning Corporation at the University of Kyoto. He was granted a sabbatical leave by Dow Corning.

Meanwhile, Mary has some research plans of her own in Kyoto. She expects to investigate the health care system of the Japanese, and hopes to study the role of nursing and nursing education in Japan.

"Right now I'm in the process of trying to establish contacts," said Graiver. "I found that Japan is not a country in which I could freely go to the university and try to set things up. I must go through many formalities first."

Graiver enlisted the aid of Dr. Crystal M. Lange, dean of the School of Nursing and Allied Health Sciences at SVSC to help her communicate with Japanese health educators. The International Council of Nurses and Wayne State University also are working with her to gain access to the appropriate people.

"The University of Kyoto is the sister university of Wayne

State," said Graiver. "I'm attempting to work through Wayne State because of the relationship the two universities already have established."

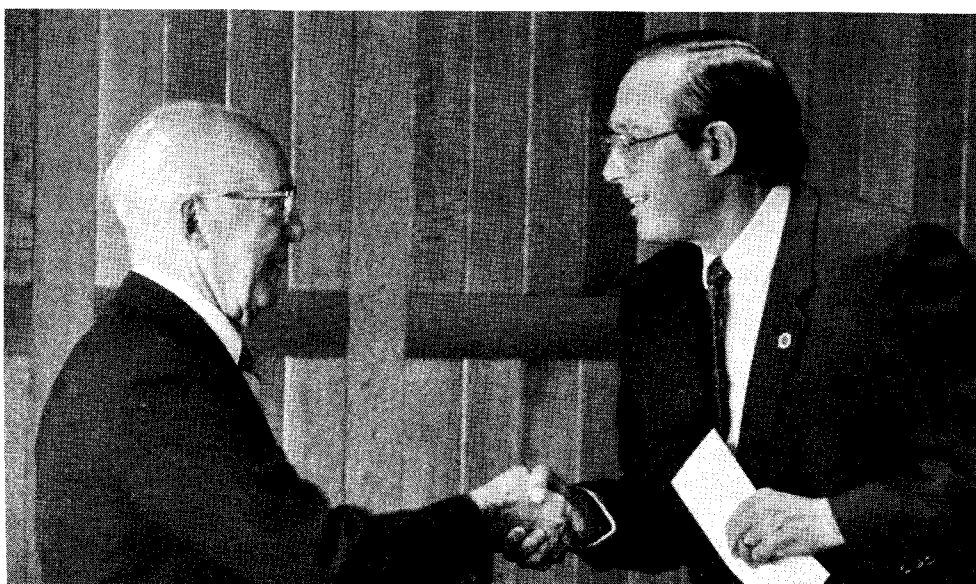
Because of the process, Graiver is not sure she will be able to accomplish all her goals. "My hopes are to concentrate on the culture of Japan and the cultural differences between the two countries. I'm concerned with the bridging of the international gaps in health care, nursing, and primarily in nursing education," Graiver said.

Graiver added that as future nurses, her students here at SVSC will be in contact with people from all cultures. "Understanding and being able to communicate with people from various cultures is important to the profession. There are always reasons why work ethics and traditions are as they are. This knowledge can be very significant to members of the health field."

Graiver plans to communicate with SVSC through letters and video tapes while in Japan. "My husband and I both do a lot of work on computer, and have been told by Dow Corning that we'll have access to one," added Graiver. "That should help me with my correspondence."

Graiver sees the upcoming trip as a challenging and exciting experience for her family. "I am married to an Israeli and have been to Israel several times, so I won't be totally shocked by going to a new country, but I know there will be adjustments. I am used to communications difficulties and watching people, and to smaller apartments. I've heard the Japanese living quarters are very small."

Due to the living arrangements in Japan, the Graivers are looking for a foster home for their seven-year-old golden retriever, Litt. The Graivers are scheduled to be away from July 15, 1986 to July, 1987.



Endowment--President Jack M. Ryder [right] shakes hands with Dr. Earl L. Warrick, retired Dow Corning senior management consultant, during a luncheon at Dow Corning Wednesday. The luncheon was held in honor of the new Earl L. Warrick Excellence in Research Award (see related story, page 1).

BOARD REPORT

Official minutes of Board of Control meetings are on file in the library. This summary is an unofficial record.



A Report of the
Saginaw Valley State College
Board of Control

June 9, 1986

Lively discussion was generated even before the Board of Control reached the action items on its agenda at Monday's regular meeting. The interchange began when Student Government President Andy Merchak read a statement outlining his position regarding Board action last month to increase tuition and fees for Michigan undergraduate students for the 1986-87 academic year.

Merchak had earlier written to Board members, suggesting that there had not been an adequate level of student input in developing the tuition and fee schedule for Board action. He also questioned the justification for the increase, as well as the method of calculating the percentage rate reported. Merchak said he felt it was inappropriate to include the \$3 general service fee in the base used to calculate percent of increase. He said the tuition increase for the upcoming year would be 4.54 percent if calculated on the tuition rate only.

Brian Oliver, president of the Student Senate, spoke in support of Merchak's position, and asked that the Board reconsider its action on tuition.

After Board comments and discussion, President Jack M. Ryder said he had "no objection to discussing the issue (of tuition and fees in-

crease)." He said SVSC attempts to set tuition rates prior to advance registration for fall semester classes. "The assessment started last year." He reminded listeners that the Board adopted a five percent tuition increase last year, then rolled that back and started the year with a deficit budget. He added, "I met with the Student Senate several months ago and reviewed with them what I expected to recommend, and said it would be about five percent. I asked for input.

"After the (Student Government) election, I called Andy Merchak and asked him to come in and review where we were. Dan Strasz (outgoing student body president) was included in the State Senate Committee hearing. Andy Merchak joined us for the State House Committee budget hearing."

At one point, Merchak inquired if it would be possible to present a proposal to the Board for an increase in the Student Government portion of the general fee and have it included as part of the 4.3 percent increase set as a guideline by the State.

Administrators and Board members agreed that communication with students was important, and said ideas for improved participation should be included on the agenda for the Board retreat. The Board did place a reconsideration

of the tuition increase on the agenda. After discussion, they voted not to change previously approved 1986-87 tuition and fee rates.

Board members approved a memorandum of agreement reappointing Dr. Ryder to a three-year term as SVSC president. According to the agreement, the new term will begin July 1, 1986, and continue in effect until June 30, 1989, with a further provision that it will be automatically extended until June 30, 1990 unless the Board provides notice in writing by May 15, 1988, that the agreement will not be extended beyond June 30, 1989.

The President's compensation base was increased 7 percent, or \$5,000. His salary was set at \$70,275, up \$2,000 from its current level. He elected to add the remaining \$3,000 increase to his deferred compensation, bringing the total deferred compensation to \$6,000 annually. Dr. Ryder's salary increase is effective January 1, 1986. It is to be reviewed January 1, 1987, and annually thereafter for changes in each succeeding year. Under terms of the contract, the President will receive all fringe benefits available to other full-time College employees, plus a continuation of automobile, housing and travel arrangements specified under earlier contracts.

SAGINAW VALLEY STATE COLLEGE
COMPARISON OF FEDERAL FINANCIAL AID FUNDS: 1985-86 AND 1986

	1985-86 Allocations	1986-87 as seen 6/6/86	1985-86 (Under) Dollars	1986-87 Percent
Direct to Students				
Pell Grants	\$1,360,213	\$1,168,842 *	(\$191,371)	-14.1%
Campus Based Funds				
Supplementary Educational Opportunity Grants (SEOG)	\$140,685	\$92,833	(\$47,852)	-34.0%
College Work Study Program (CWS)	\$211,563	\$202,553	(\$9,010)	-4.3%
National Direct Student Loans (NDSL)	\$90,000	\$120,000	\$30,000	33.3%
Subtotal	\$442,248	\$415,386	(\$26,862)	-6.1%
Total	\$1,802,461	\$1,584,228	(\$218,233)	-12.1%

*Pell Grant estimate for 1986-87 is based on financial aid profile of 1985-86 students. The number of students to be aided in 1986-87, and their need, will differ, causing this figure to change.

BUILDING UPDATE**Item - I.F. 2 Completion:**

Site and landscaping work around the complex is continuing, as is planning for the upcoming move into the new buildings. Director of Engineering Services Robert Hanes reminds College personnel that they should not enter the buildings without first receiving permission. "The buildings will not be transferred to SVSC until they are complete, and until that time we do not have free access to them," he said. Tours can be arranged by contacting his office at extension 4080.

Item - Open Forums: The September 11 Capital Outlay forum announced in the last Interior has been changed to:

Weds., Sept. 17 - 4:15 p.m.
Lower Level Doan Center

The first forum is still scheduled for:

Thurs., June 19 - 3:30 p.m.
Rm. 224 Pioneer Hall

Item - H. & P.E. Complex: The architects have completed the schematic drawings showing the relationships of rooms and various components of the complex and submitted them to the Michigan Department of Management and Budget. From there, the drawings go to the Joint Capital Outlay Committee for approval and authorization to proceed with preliminary drawings that diagram such details as plumbing and wiring.

BRIEFLY SPEAKING

--The **Bilingual/Bicultural Center** has established the following summer hours to meet the needs of students:

Mondays - 8 a.m.-6:30 p.m.
Tues.-Fri. - 8 a.m.-4:30 p.m.

--Health Services is sponsoring a series of **CPR workshops** during the months of June and July. For more information, call extension 4271.

--SVSC is participating in the **Cystic Fibrosis Bike-A-Thon** on June 21. For registration, pledge forms, or more information please call 752-1144.

--SVSC **Cardinal Club** members are invited to a picnic and country hoe-down from 1:00 to 8:00 p.m. on July 12. Activities include volleyball, softball, music, an I.F. 2 tour, and a chicken BBQ. The event is free to Club members. For information about cost of guest tickets, call Mary Jane Graves at extension 4030 or Kert Lehman at extension 4165.

PROFESSIONAL PROFILE

--Dr. **Altaf-ur-Rahman**, associate professor in the department of electrical engineering and technology, attended the fourth annual conference on Intelligent Systems and Machines. The event was organized by the Center for Robotics and Advanced Automation at Oakland University from April 28 through April 30. Dr. Rahman presented a paper entitled "Robot Arm Control" during an afternoon session on robotics. The paper was based on his robotics research at SVSC.

--G.D.P. Meat Processors, Inc., a newly opened Saginaw firm, gives BIDI of SVSC part of the credit for its successful opening. BIDI personnel worked with G.D.P. founder George Peet to prepare projected income and cash flow statements for the fledgling business. The statements were used to develop a business plan, in

turn used to secure financing for the operation.

--Dr. **Thomas Renna**, professor of history, presented a paper titled "Bernard of Clairvaux and the Temple of Solomon" at the 21st International Congress on Medieval Studies held at Western Michigan University from May 8-11. The conference was sponsored by WMU Medieval Institute.

On May 24 Renna presented another paper, "Utopia and English Medieval Traditions," at the Teorie e Prassi Utopiche nell' eta Moderna e postmoderna, II Congresso Internazionale di Studi sulle Utopie, held at Rome and Universita di Reggio Calabria, Italy from May 21-26.

ACROSS CAMPUS

--Dr. **William G. Elliott**, professor of business law, is recuperating after undergoing tests last week at St. Luke's Hospital in Saginaw.

1986-87 HOLIDAY SCHEDULE

To assist members of the campus community who will be planning college or personal activities, closing dates for the 1986-87 year-end holidays have been established. The campus will close for holiday break beginning at 4:30 p.m. Tuesday, December 23. Offices will remain closed through Sunday, December 28. Offices will be open Monday, December 29 and Tuesday, December 30, but will close again Wednesday, December 31 through Sunday, January 4. December 24, 25, 31 and January 1 are scheduled holidays. Additional granted personal days are December 26 and January 2. Employees who wish to be off from work on December 29 and 30 can use vacation days, personal leave or unpaid leave.

BECKER NAMED TO HALL OF FAME

SVSC Director of Athletics Robert T. Becker has been inducted into the NAIA Hall of Fame. The induction ceremony took place on the campus of Huntingdon College in Montgomery, Alabama, on Monday, June 2 during the Hall of Fame Banquet that kicked off the NAIA national golf tournament.

"The Hall of Fame Award is the association's highest recognition," said Harry Fritz, executive director of the NAIA. The selection was made by the NAIA Hall of Fame committee and the NAIA Executive Committee.

A Saginaw native, Becker initiated the golf program at SVSC in 1969 and has enjoyed success on both the local and national levels. SVSC has won six GLIAC titles during the last 12 years. The Cardinals won their first NAIA District 23 title in 1974, and claimed the crown for the tenth time earlier this year.

Highly regarded by his peers for his organizational skills, Becker has been instrumental in the blossoming of the SVSC sports program during his five years as athletic director. Currently in his 16th year, he served as director of business and auxiliary services for 11 years. A graduate of Arthur Hill High School, Becker earned a B.S. degree in education from Eastern Michigan University and an M.A. in school administration from the University of Michigan.

SIMONS ACCEPTS NORTH CAROLINA POST

Assistant men's basketball coach Mark A. Simons has accepted a position as head coach at St. Andrews Presbyterian College in Laurinburg, North Carolina. He announced his decision last week, after signing a one-year contract to direct the Knights' NCAA Division III program. He replaces Doug Riley, who resigned the post after nine seasons.

The position is the first as head coach for Simons, who has been at SVSC for 10 seasons. After leading Sacred Heart High School in Mt. Pleasant to the state championship in 1967, Simons attended Aquinas College where he earned All-American honors. He served as assistant coach at Aquinas, and later followed SVSC head coach Bob Pratt to the Cardinal program as an assistant. In addition to a B.S. from Aquinas, Simons holds an M.S. from MSU.

HIGH FIVE

Saginaw Valley's golf team placed 13th in the NAIA National Golf Tournament, held at Oak Hollow Country Club in Huntingdon, Alabama. The four-day, 72-hole tournament was won by host Huntingdon with a final score of 1,176. SVSC's team total was 1,236. The team, which also placed 13th last year, faced a much stronger field, according to Coach Bob Becker. Senior Tom Ham led the Cardinals with a tournament total of 301, which was just four strokes shy of earning him All-American honors. Senior Kendall Kinsey carded a 307, while teammates Vic Morgan and Andy Bethune each shot 316. Joe Sabatino had a 334.

EVENTWATCH

June 10: Development Seminar
June 17,18: Orientation

For times and details
call Information Services

REFERENCE DEPARTMENT

SAGINAW VALLEY STATE COLLEGE LIBRARY
2250 PIERCE ROAD
UNIVERSITY CENTER, MICHIGAN 48710



Members of the campus community joined friends of the college at ground breaking ceremonies for the Fine Arts Center Sunday evening. Plans for the facility include a sculpture gallery named for Birmingham artist Marshall M. Fredericks. Works by Fredericks, similar to the one unveiled at the ceremony, will be displayed in the new facility. The entire cost of the \$7 million structure is being secured from private sources.

The contract also spells out the President's right to appointment to the faculty with two years credit toward tenure under certain circumstances.

Board Chairman Dr. Richard Gilmore said the contract renewal was an expression of "positive appreciation for President Ryder and the growth of the College during his tenure."

"I will continue to try to serve this Board and the faculty and students in the best way that I can," Dr. Ryder said. "I look forward to working with all of you in the next three years."

The annual election of Board officers was conducted, with two names placed in nomination for the chairmanship. Dr. Richard Gilmore was placed on the slate by the nominating committee, and Mrs. Joyce Woods was nominated by Henry Klykylo. Other nominations were: vice chairman - Mrs. Florence "Jo" Saltzman; secretary - Mrs. Joyce Woods; treasurer - Mr. Henry Klykylo. The roll call vote resulted in the election of Dr. Richard Gilmore as chairman by a 4-3 vote. All other candidates were elected unanimously, with new terms effective July 1.

A presentation by Dr. Ann K. Dickey on the apparent impact of the Gramm-Rudman-Hollings legislation generated questions and concern about its effect on SVSC students. Charts prepared by Dr. Dickey were distributed and are included with this report. She said the charts and tables represent the "worst case" scenario, and noted that final legislative action may improve the situation for students receiving Pell Grant assistance. She also pointed out that there is a strong likelihood of increased state support for students to ease

the effects of Federal cuts.

"The State has appropriated, but not yet authorized, \$5 million in College Work Study aid," she said. Dr. Dickey said another \$2 million in State funds has been authorized and appropriated for assistance to part-time adult students, but is being held while calendars for State and Federal financial aid are being coordinated.

Board members heard a report from Dr. Robert S. P. Yien, vice president for academic affairs, on the status of enrollment limitation plans for the School of Education. He said enrollments in the teacher education programs increased 125 percent in the past year, placing stress on College resources. Following discussion with School of Education faculty, a decision was made to hold enrollments at the fall 1986 level for at least a year. In addition, the school will adopt a new admission policy, with details to be announced in September. Board member Dr. Gumecindo Salas expressed concern about attempts to limit enrollments. He said that any such decision should consider all areas of the job market for teachers -- both geographical and by area of specialization. Teacher shortages may occur in some areas even though others are filled, he said. Salas said it also is necessary to assess the type of students seeking admission to the program, since there is a shortage of minority students in the programs, and a shortage of bilingual teachers.

In other action, the Board:

--appointed Mr. John W. Kendall to the Board of Fellows. He will fill the position vacated by Mr. David Wierman, who requested

emeritus status.

--adopted a resolution commending Daniel M. Strasz for his service as President of the SVSC Student Government.

--authorized reappointment of Yeo & Yeo Certified Public Accountants to conduct the financial audit for the 1985-86 fiscal year.

--approved a continuation of general fund operating expenditures until the 1986-87 budget is finalized and approved.

--approved a resolution authorizing President Ryder to sign an agreement with Dr. Marshall M. Fredericks for the transfer of his work to the Marshall M. Fredericks Sculpture Gallery.

--appointed Dr. Crystal M. Lange and Dr. Eugene J. Hamilton to the Reappointment and Tenure Commission for promotion review, and Richard Thompson to replace Dr. Lange on the Commission for sabbatical-leave review.

--received a report by Dr. Ralph Coppola, director of sponsored programs, showing the status of recent grant proposals.

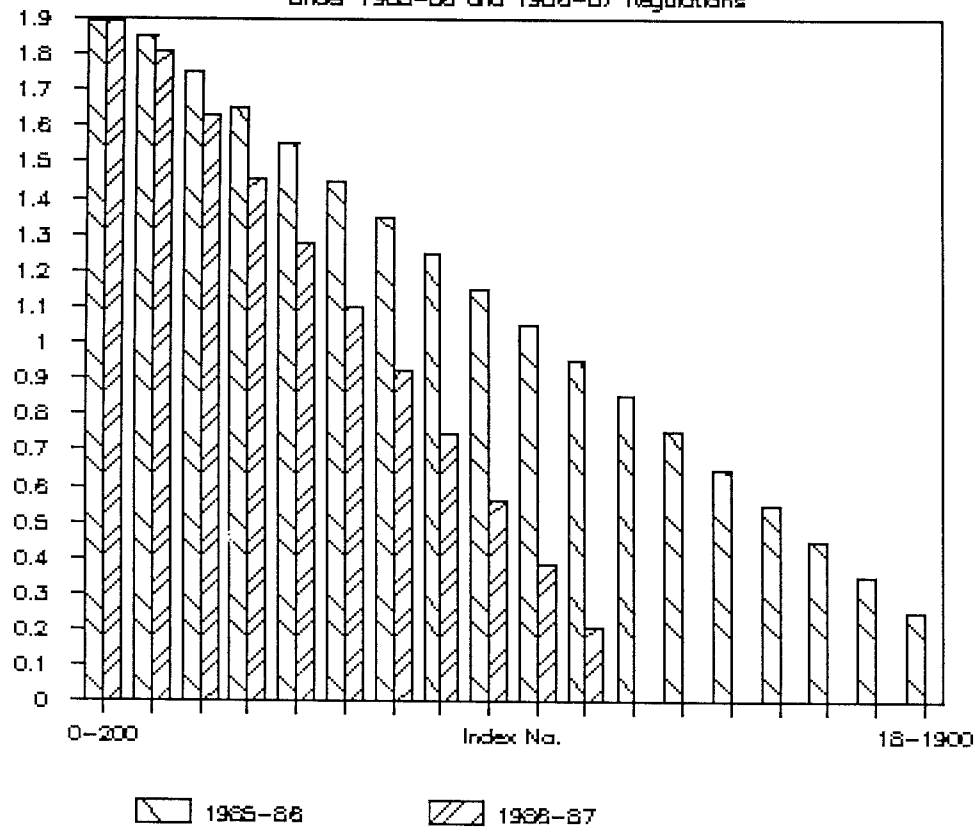
--heard a preliminary report on fall admissions indicating an overall increase of 5.1 percent over admissions on June 1, 1985.

--added copies of the legislative commendations honoring former Board members Dorothy D. Arbury and John W. Kendall to Board records.

--Set Monday, August 25, for a Board retreat with the President and top level administrators.

Comparison of Pell Grant Awards

Under 1985-86 and 1986-87 Regulations



CHANGES IN PELL GRANT REGULATIONS MEAN REDUCED AWARDS FOR NEARLY 500 STUDENTS

Pell Index	Size of Award		No. at SVSC 1985-86
	1985-86	1986-87	
0	\$1,890	\$1,890	508
1 - 100	1,890	1,890	45
101 - 200	1,890	1,890	38
201 - 300	1,850	1,811	33
301 - 400	1,750	1,633	36
401 - 500	1,650	1,455	29
501 - 600	1,550	1,277	27
601 - 700	1,450	1,099	21
701 - 800	1,350	921	32
801 - 900	1,250	743	40
901 - 1000	1,150	565	24
1001 - 1100	1,050	387	22
1101 - 1200	950	209	37
1201 - 1300	850	0	26
1301 - 1400	750	0	34
1401 - 1500	650	0	23
1501 - 1600	550	0	23
1601 - 1700	450	0	30
1701 - 1800	350	0	19
1801 - 1900	250	0	24
1901 - & Up	0	0	0