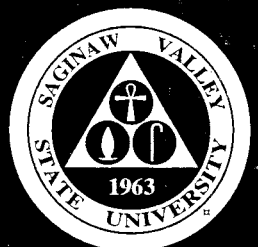


SVSU®

**BOARD OF CONTROL
MINUTES**

AUGUST 13, 2001



SAGINAW VALLEY STATE UNIVERSITY
BOARD OF CONTROL
AUGUST 13, 2001
REGULAR FORMAL SESSION
INDEX OF ACTIONS

RES-1465	RESOLUTION TO AMEND POLICY AND PROCEDURES FOR GRANTING FACULTY/STAFF EMERITI STATUS APPROVED	1
BM-955	MOTION TO MOVE TO INFORMAL SESSION TO DISCUSS PERSONNEL MATTER APPROVED	4
BM-956	MOTION TO RECONVENE IN FORMAL SESSION APPROVED	4
RES-1466	RESOLUTION TO AUTHORIZE SAGINAW VALLEY STATE UNIVERSITY TO PARTICIPATE WITH OTHER MUNICIPALITIES IN AN INTERMUNICIPALITY STUDY COMMITTEE REGARDING A NON-MOTORIZED TRAIL FACILITY FROM BAY CITY TO THE CITY OF ZILWAUKEE APPROVED	5
BM-957	MOTION TO ADJOURN APPROVED	6

MINUTES
BOARD OF CONTROL
Regular Formal Session
August 13, 2001
1:30 p.m.

Board of Control Room – Wickes Hall Third Floor

Present: Gilbertson
Kelly
Law
Vitito
Walpole
Yantz

Absent: Braun
Escobedo
Sims

Others Present: V. Allen
L. Beuthin
C. Dorne
S. Hocquard
C. Jerome
S. Johnson
P. Latty
R. Maurovich
B. Mudd
J. Muladore
S. Opheim
R. Payne
R. Schneider
J. Stanley
R. Thompson
R. Yien

I. CALL TO ORDER

Chairman Vitito called the meeting to order at 1:34 p.m.

II. PROCEDURAL ITEMS

A. **Approval of Agenda and Additions to and Deletions from Agenda.**

President Gilbertson asked that the Board move to Informal Session to discuss a personnel issue following the Information and Discussion Items.

Hearing no objection, Chairman Vitito declared the agenda approved as revised.

B. **Approval of Minutes of June 18, 2001 Regular Formal Session and July 9, 2001 Special Formal Session of the Board of Control.**

It was moved and supported that the minutes of the June 18, 2001 Regular Formal Session and the minutes of the July 9, 2001 Special Formal Session be approved.

The minutes were unanimously APPROVED as written.

C. **Recognition of the Official Representative of the Faculty Association**

Professor Randall Hock, President of the Faculty Association, was not able to attend the meeting.

D. **Communications and Requests to Appear Before the Board**

There were no communications or requests to appear before the Board.

III. ACTION ITEM

- 1) Resolution to Amend Policy and Procedures for Granting Faculty/Staff Emeriti Status

RES-1465 **It was moved and supported that the following resolution be adopted:**

WHEREAS, The criteria for granting emeritus/emeraliti status for faculty/staff should be amended to make the selection process less cumbersome;

NOW, THEREFORE, BE IT RESOLVED, That the Saginaw Valley State University Board of Control gives formal approval to the attached amended policy. (See Appendix One: Policy)

President Gilbertson told the Board the current policy and procedures for granting faculty/staff emeriti status are cumbersome. Because the University honors people whose service runs a wide range of professions and responsibilities, it is impossible to be perfectly precise. This honor is discretionary: it is not an entitlement. The policy has been redrafted with more structure and additional wording with examples of the kinds of service and the level of performance to be expected for eligibility for this award.

Chairman Vitito added that the matter had been discussed in detail in committee.

He asked for questions or comments. Hearing none, he called for the vote.

The motion was APPROVED unanimously.

IV. INFORMATION AND DISCUSSION ITEMS

2) Staff Members of the Month

Pat Latty and Sharon Opheim, Staff Members of the Month for July, were presented to the Board. (See Appendix Two: Latty/Opheim)

3) Report on Faculty Recruitment for Fall 2001-02

President Gilbertson told the Board that as of this fall semester, 43% of SVSU's full-time faculty will have been hired since 1995.

Dr. Robert S.P. Yien, Vice President for Academic Affairs, told the Board faculty recruitment started early last September. A total of 34 positions were authorized to be filled.

Dr. Yien reviewed the faculty appointments for 2001-2002. (See Appendix Three: Appointments) He noted that four positions remain unfilled at this time. The names listed with asterisks indicate one-year temporary appointments. The faculty were recruited nation-wide: they are coming here from 10 states, from Connecticut to Utah. Seventeen are from the State of Michigan. Those faculty members with “ABD” shown in the Degree column have fulfilled all the coursework required for a PhD, except for their dissertation.

This coming fall the University will have 235 full-time faculty. The fastest growing unit is the College of Education. University-wide, 47% are full-professors; 20% are associate professors; 24% are assistant professors; 3% are instructors; 6% are lecturers. Two endowed chairs have also been recruited.

4) Housing Report

The Board received a report on housing from Richard P. Thompson, Dean of Student Affairs. All housing facilities are filled to capacity, including the new Village Apartments, Phase II of which will open this fall. Of the nearly 1,500 students who will be living on campus for the fall semester, 488 will reside in the First Year Suites; 312 in the Student Living Center; 486 in the University Village Apartments, and 200 in the Pine Grove Apartments.

Mr. Thompson reviewed the ethnic breakdown and class standings of the students in residence on campus. The students seem to be pleased with the choice of facilities available to them.

5) Update on Construction

Mr. Stephen Hocquard, Director of Engineering Services, reviewed construction projects

underway on campus, as well as those which have recently been completed. He noted that the total estimated cost of the work is nearly \$100 million. (See Appendix Four: Construction)

6) Enrollment Report

Dr. Robert Maurovich, Vice President for Student Enrollment and Services, told the Board that fall semester enrollments were projected to reach 8,900 students, compared to 2000's total of 8,622. He reviewed the expected enrollment numbers and credit hours for the various categories of students, and noted that the goal of a 2.83% increase in headcount and a 3.01% increase in credit hour generation appears to be on track.

7) Human Resources Report

President Gilbertson reviewed the attached Human Resources Report. (See Appendix Five: Human Resources) He noted that in addition to those listed in the report, Ms. Kim Chandler was just hired as Head Women's Basketball Coach.

V. OTHER ITEMS FOR CONSIDERATION OR ACTION

8) Motion to Move to Informal Session to Discuss a Personnel Matter

BM-955 It was moved and supported that the Board move to Informal Session to discuss a personnel matter.

The motion was APPROVED unanimously.

The Board moved to Informal Session at 2:29 p.m.

9) Motion to Reconvene in Formal Session

BM-956 It was moved and supported that the Board reconvene in Formal Session

The motion was APPROVED unanimously.

The Board reconvened in Formal Session at 3:03 p.m.

- 10) Virgil Allen, Executive Director of the SVSU Foundation, discussed scholarships, endowments, and fund raising opportunities related to the Capital Campaign.
- 11) James Muladore, Controller and Assistant Vice President for Administration and Business Affairs, updated the Board on the FY00-01 preliminary General Fund financial year-end status and the process of closing the financial records for the fiscal year ended June 20, 2001. He also discussed the FY02 preliminary budget and long-term auxiliary systems.
- 12) President Gilbertson and the Board discussed the plans for the Student Center and the Ryder Center.
- 13) Ronald Schneider, Director of School/University Partnerships, discussed new programs in public education. He also noted that one of SVSU charter schools, Newland Academy, is in danger of closing. He is working with them on this process.
- 14) Lucille Beuthin, Director of Community Relations, reported on the Public Affairs Division's efforts to develop a comprehensive strategic public relations plan.
- 15) Shaun Johnson, President of the Student Association, reviewed the Student Association's goals and objectives for 2001-2002.
- 16) President Gilbertson discussed procedures for naming campus facilities.
- 17) Resolution to Authorize Saginaw Valley State University to Participate with Other Municipalities in an Intermunicipality Study Committee Regarding a Non-Motorized Trail Facility from Bay City to the City of Zilwaukee

RES-1466 **It was moved and supported that the following resolution be adopted:**

WHEREAS, Public Act 200 of 1957 allows Saginaw Valley State University (SVSU) to participate with other municipalities in an "Intermunicipality Study Committee" to study items of mutual interest and concern; and,

WHEREAS, Certain municipalities have identified a mutual common interest in the acquisition of the abandoned rail corridor from Bay City to the City of Zilwaukee for the

future establishment of a non-motorized trail facility; and,

WHEREAS, Information is needed with respect to the process of acquisition, identification and funding sources, development and operational costs, ownership, and maintenance arrangements, and methods by which the municipalities might continue to cooperate to implement such an effort; and

WHEREAS, SVSU, while not a municipality, has been requested to participate in this study and that its Board of Control adopt this resolution;

NOW, THEREFORE, BE IT RESOLVED, That the Board of Control of SVSU hereby authorizes its President to sign a Letter of Cooperation by and between such municipalities in substantially the form as presented and attached hereto and take any and all actions necessary to implement same. (See Appendix Six: Letter of Cooperation)

Stephen Hocquard, Director of Engineering Services, told the Board there would be no cost to SVSU for the trail, which does not enter SVSU property. Resolution 1466 would allow the University to join in the study and indicates its support of the concept for the project.

The motion was APPROVED unanimously.

VI. REMARKS BY THE PRESIDENT

President Gilbertson told the Board the University does not yet have a contract with the Support Staff. He noted that the University had received a 1.7% increase in State appropriations, and reviewed the recent efforts to repeal the tuition tax credit. He invited the Board to attend the August 22nd Dedication of the Herbert Dow Doan Science Building and his Orientation Address and the Back to School Picnic on August 23rd.

VII. ADJOURNMENT

18) Motion to Adjourn

BM-957 **It was moved and supported that the meeting be adjourned.**

The motion was APPROVED unanimously.

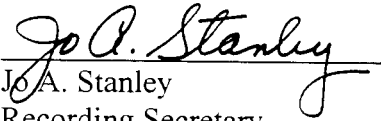
August 13, 2001

The meeting was adjourned at 4:33 p.m.

Respectfully submitted:

Robert J. Vitito
Chairman

D. Brian Law
Secretary


Jo A. Stanley
Recording Secretary

SAGINAW VALLEY STATE UNIVERSITY POLICY AND PROCEDURES FOR GRANTING FACULTY/STAFF EMERITI STATUS

In order to honor distinguished service by members of the faculty and staff and to retain these individuals as members of the SVSU community, the Board of Control may grant them emeriti status. The Board will consider for emeriti status those who meet the criteria stated below.

CRITERIA FOR FACULTY EMERITI STATUS

1. A faculty member shall have retired voluntarily from SVSU at or beyond age 55; and
2. He or she shall have taught at SVSU for not less than ten years; and
3. He or she shall have a record of exemplary teaching and service to the University and its students. Among factors to be considered are evidence of curricular or instructional leadership, recognition for professional or academic achievements that bring credit to the University, extensive involvement with students in academic or extra-curricular programs and activities, special efforts to improve or develop educational or support programs, and contributions to one's academic or professional discipline. In all cases persons selected for this honor will have demonstrated commitment to the University Community that is of such a character and quality as to be above and beyond standard expectations for faculty members.

CRITERIA FOR STAFF EMERITI STATUS

1. A staff member shall have retired voluntarily at or beyond age 55; and
2. He or she shall have served full-time at SVSU in a position of significant responsibility for at least ten years; and
3. He or she shall have a record of exemplary service to the University and its students. Among factors to be considered are evidence of high standards in the performance of all duties, leadership in the improvement or development of University programs or functions, extensive involvement with students in academic or extra-curricular activities, recognition for professional achievements that brings credit to the University, and contributions to the betterment of services to students and the public. In all cases persons selected for this honor will have demonstrated commitment to the University Community that is of such a character and quality as to be above and beyond standard expectations for members of the staff.

PROCESS FOR SELECTION

Recommendations for faculty emeriti status may be made by academic departments through the dean of the college and the vice president for academic affairs. Recommendations for staff emeriti status may be made by administrative units through the appropriate director and vice president. Such recommendations shall be submitted to the president from the vice presidents for consideration and possible submission to the Board of Control.

Staff Member

OF THE MONTH

**Pat Latty
and
Sharon
Opheim**

**Faculty
Secretaries**

**Third Floor
Brown Hall**

July 2001

COLLABORATION IS AN effective way to achieve objectives, experts often advise. That may explain why the clerical station on third floor Brown Hall operates so efficiently.

Faculty secretaries Pat Latty and Sharon Opheim share clerical duties for the faculty on third floor Brown Hall, working with as many as 41 professors from eight departments.

"Instead of dividing up the faculty, our system of 'sharing the workload as tasks come in' seems to be working out well for us," said Latty.

"Sometimes we've both pitched in on a particular project in order to get it completed on time," added Opheim. "Other times, we may find ourselves finishing up a rough draft that the other one started."

In fact, the two share such a large volume of

computer files that they have requested a shared folder on the network. This would enable them to gain access to work without swapping floppy disks or using each other's computers.

Their workload includes a variety of document preparation.

"Because the clerical needs vary quite a bit among the faculty, we end up doing a variety of things for different people," Latty said. "Some of the tasks we may be involved in are typing syllabi and exams for professors, typing

letters of recommendation, and typing class outlines for lectures to be used as overheads."

"There are times when we prepare correspondence, such as letters to the Roberts Fellows, admission letters to social work students, and departmental memos," Opheim said.

"We may be asked to order desk copies of text books, or order books and journal articles using the Inter-library Loan System," Latty explained. "Because of the variety of tasks we perform, our jobs always are interesting."

"And being involved in the different disciplines often gives us the opportunity to learn something new," Opheim noted. "The faculty have made this a great place to work!"

Latty came to SVSU via the secretarial/clerical pool in 1994.

"My first assignment turned into a long-term temporary position in the loan department of the Office of Scholarships and Student Financial Aid," Latty said. Her other positions included permanent part-time posts in the Cashier's Office, Graduate Admissions and the Academic Achievement Center. Latty became full time when she accepted her current position. Before coming to SVSU, Latty worked as a teller for Michigan National Bank.

Latty and her husband, Dale, have been married 30 years. They have two sons, Chris (28) and Shawn (25). Latty said her idea of leisure is to walk in the woods with her husband to look for wildlife.

Opheim's professional background includes eight years at Central Michigan University, four years as the secretary for the president, vice president and engineering department at Gougeon Bros., and nearly 10 years at Bay Health Systems. Her SVSU employment began in May 2000.

Opheim has three children, Melissa (23), Karl II (22) and Emily (19). She and her husband, Karl, enjoy watching and attending NASCAR races and Red Wings games.



FACULTY APPOINTMENTS FOR 2001-2002

College of Arts & Behavioral Sciences

Communication	<i>Vacant</i>	Assistant Professor	New (2000)
Communication	Charles Bailey*	Instructor	Replace-Melcher
English	Laura Yelsik	Lecturer	Replace-Raica-Klotz
English	Melissa Seitz	Lecturer	New (2000)
English	C. Vincent Samarco	Assistant Professor	Replace-Barnett
English	Thomas Meehan	Lecturer	New
English	David Gaskill*	Assistant Professor	New
English	Ruth Copp*	Instructor	Replace-Fulbrights
History	Melissa Teed	Assistant Professor	New (2000)
History	Alexander Nalbach	Assistant Professor	New
History	Nameeta Mathur	Assistant Professor	New
History/Geography	Frederick Sunderman	Assistant Professor	New
Political Science	Douglas McGee	Assistant Professor	New
Political Science	Mark Nicol*	Instructor	Replace-Ashley
Psychology	Sandra Randall	Assistant Professor	New (1999)
Social Work	Lucy Mercier	Assistant Professor	Replace-Rae
Social Work	Vanessa Brooks Herd*	Instructor	Replace-McKinney
Sociology	Elson Boles	Assistant Professor	Replace-Barnett

College of Business & Management

Management	Danilo Sirias	Assistant Professor	New
Marketing/Finance	<i>Vacant</i>	Assistant Professor	New

College of Education

Educ Leadership	Elizabeth Hansen*	Associate Professor	Replace-McManus (Fulbright)
Educ Leadership	Dian Shaw	Associate Professor	New (2000)
Phys & Health Educ	Marsha Wilson	Associate Professor	Replace-Romine
TE: Elem/EC/Sp Educ	David Cline	Associate Professor	New
TE: Elem/EC/Sp Educ	Nancy Rice	Associate Professor	Replace-Storey
TE: Elem/EC/Sp Educ	Debra Lively	Associate Professor	New
TE: Elem/EC/Sp Educ	Mark Deschaine*	Assistant Professor	Replace-Barbus
TE: Elem/EC/Sp Educ	Kathy Kalmar	Assistant Professor	New (2000)
TE: Elem/EC/Math	<i>Vacant</i>	Assistant Professor	New

College of Nursing & Health Sciences

Nursing	Rose Schlika	Assistant Professor	Replace-Bender
Nursing	<i>Vacant</i>	Assist/Assoc Professor	Replace-Solterman

College of Science, Engineering & Technology

Computer Science	Farid Hallouche	Assistant Professor	New
Mathematics	Hamza Ahmad	Associate Professor	Replace-Gilbert
Physics/Earth Science	David Slaven*	Assistant Professor	New (1999)

*One-year temporary appointment

College of Arts & Behavioral Sciences

Department	Name	Rank	Degree	Degree From	Came From
Communication	*Charles Bailey	Instr	MA	University of Michigan	SVSU-Adjunct
English	Laura Yelsik	Lec	MAT	Saginaw Valley State	SVSU- 1 yr temp 00-01
English	Melissa Seitz	Lec	MA	Michigan State Univ	SVSU- 1 yr temp 00-01
English	C. Vincent Samarco	Asst	PhD	Univ of Southern Miss	McKendree College
English	Thomas Meehan	Lec	MA	Central Michigan Univ	Citizens for Better Care-Bridgeport
English	*David Gaskill	Asst	ABD	Michigan Tech Univ	Michigan Tech Univ
English	*Ruth Copp	Instr	MAT	Saginaw Valley State	SVSU-Adjunct
History	Melissa Teed	Asst	PhD	Univ of Connecticut	SVSU- 1 yr temp 00-01
History	Alexander Nalbach	Asst	PhD	Univ of Chicago	Univ of Mich-Flint
History	Nameeta Mathur	Asst	PhD	West Virginia Univ	Hartwick College
History/Geog	Frederick Sunderman	Asst	PhD	Louisiana State Univ	Louisiana State Univ
Political Science	Douglas McGee	Asst	PhD	University of Utah	Salt Lake Comm College
Political Science	*Mark Nicol	Instr	MA	Saginaw Valley State	Wolverine Human Resources
Psychology	Sandra Randall	Asst	PhD	University of Michigan	SVSU- 1 yr temp 00-01
Social Work	Lucy Mercier	Asst	PhD	Michigan State Univ	Michigan State Univ
Social Work	*Vanessa Brooks Herd	Instr	MSW	Wayne State University	Wayne State University
Sociology	Elson Boles	Asst	PhD	SUNY-Binghamton	Univ of Science & Arts of Oklahoma
College of Business & Management					
Management	Danilo Sirias	Asst	PhD	University of Memphis	Christopher Newport Univ

Continued.....

College of Education

Educ Leadership	*Elizabeth Hansen	Assoc	PhD	Michigan State Univ	SVSU-Adjunct
Educ Leadership	Dian Shaw	Assoc	PhD	University of Michigan	SVSU- 1 yr temp 00-01
Phys & Health Ed	Marsha Wilson	Assoc	PhD	Oklahoma State Univ	Oklahoma City University
TE:Elem/EC/Sp Ed	David Cline	Assoc	PhD	Michigan State Univ	Moorehead State Univ
TE:Elem/EC/Sp Ed	Nancy Rice	Assoc	PhD	Michigan State Univ	Chippewa Valley Schools
TE:Elem/EC/Sp Ed	Debra Lively	Assoc	MA	Michigan State Univ	Saginaw Public Schools
TE:Elem/EC/Sp Ed	*Mark Deschaine	Asst	ABD	University of Toledo	SVSU - Inst Tech Specialist
TE:Elem/EC/Sp Ed	Kathy Kalmar	Asst	EdS	Wayne State University	SVSU- 1 yr temp 00-01

Crystal M. Lange College of Nursing & Health Sciences

Nursing	Rose Schliska	Asst	MS	University of Michigan	Sag Visiting Nurse Assoc
---------	---------------	------	----	------------------------	--------------------------

College of Science, Engineering & Technology

Computer Science	Farid Hallouche	Asst	PhD	University of Newcastle	Xintra International
Math	Hamza Ahmad	Assoc	PhD	Louisiana State Univ	Lincoln University
Physics/Earth Sci	*David Slaven	Asst	PhD	Iowa State	SVSU- 1 yr temp 00-01

*one-year temporary appointments

SVSU Faculty 2001-02

	<u>Total</u>	<u>A&BS</u>	<u>B&M</u>	<u>EDUC</u>	<u>N&HS</u>	<u>SE&T</u>
	235	101	25	40	14	55
TENURED	131	55	20	12	10	34
%tenured	56%	54%	80%	30%	71%	62%

SVSU Faculty 2000-01

	<u>Total</u>	<u>A&BS</u>	<u>B&M</u>	<u>EDUC</u>	<u>N&HS</u>	<u>SE&T</u>
	228	97	25	37	15	54
TENURED	138	58	21	14	11	34
%tenured	60%	60%	84%	38%	73%	63%

SVSU Faculty 1999-00

	<u>Total</u>	<u>A&BS</u>	<u>B&M</u>	<u>EDUC</u>	<u>N&HS</u>	<u>SE&T</u>
	211	92	23	29	16	51
TENURED	137	59	21	13	12	32
%tenured	65%	64%	91%	45%	75%	63%

SVSU Faculty 1998-99

	<u>Total</u>	<u>A&BS</u>	<u>B&M</u>	<u>EDUC</u>	<u>N&HS</u>	<u>SE&T</u>
	202	87	23	26	16	50
TENURED	145	62	23	17	12	31
%tenured	72%	71%	100%	65%	75%	62%

SVSU Faculty By Rank (including promotions for 2001-2002)

RANK	SVSU	A&BS	B&M	EDUC	N&AH	SE&T
PROFESSOR %professor	110 47%	49 49%	15 60%	13 33%	5 36%	28 51%
ASSOCIATE %associate	48 20%	10 10%	5 20%	17 42%	4 28%	12 22%
ASSISTANT %assistant	56 24%	28 28%	5 20%	10 25%	5 36%	8 15%
INSTRUCTOR %instructor	7 3%	7 7%	0 0%	0 0%	0 7%	0 0%
LECTURER %lecturer	14 6%	7 7%	0 0%	0 0%	0 0%	7 12%

CONSTRUCTION ZONE

Updating SVSU Campus

Saginaw Valley State University recently has experienced dramatic increases in the size of its student body, workforce and physical plant. Numerous construction projects are under way, or are actively in the design stages. The Office of Engineering Services is coordinating these new projects, most of which are progressing simultaneously. The total estimated cost of the work is nearly \$100 million. For further information on construction projects at Saginaw Valley State University, contact the Office of University Communications at 790-4039, or E-mail: ucomm@svsu.edu.



Down Concourse

Glass dividers have been added to create smaller, more intimate spaces for students to meet, study or pass the time between classes. Currently tiled, the floors will be carpeted and new furniture will be placed in each lounge. Computer stations with access to the Internet and campus E-mail network will be installed. A large-screen television also will be placed in one of the lounges. Work already has begun; the renovation is expected to be completed by early September 2001.

Collings Drive

Improved drainage, new catch basins and resurfacing of this University drive that allows traffic to flow through the heart of the campus has been completed in time for the start of the Detroit Lions Training Camp.

Fountain

A fountain will be added to the retention pond located near Bay Road. Designed to be aesthetically pleasing, the fountain will reach a spray height of 35 feet and will be lit for viewing after dark. The fountain should be up and running in August 2001.



Herbert Dow Doan Science Building

A limited number of summer courses are meeting in this \$24 million facility, which will be fully operational in time for fall 2001 semester. It includes 105,000 square feet of new construction and 38,530 of renovated area. The two-story facility

fills-in between the Science Building and Zahnow Library, with the new construction to the east. It includes classrooms, computer laboratories, computer science teaching laboratories, chemistry laboratories, as well as laboratory support spaces and faculty offices. Workers are adding "final finishes," which include spot painting, carpeting and landscaping. Designed to service the Chemistry and Computer Science departments, the facility also will host the Biology and Physics departments until renovations to the existing Science Building are complete.

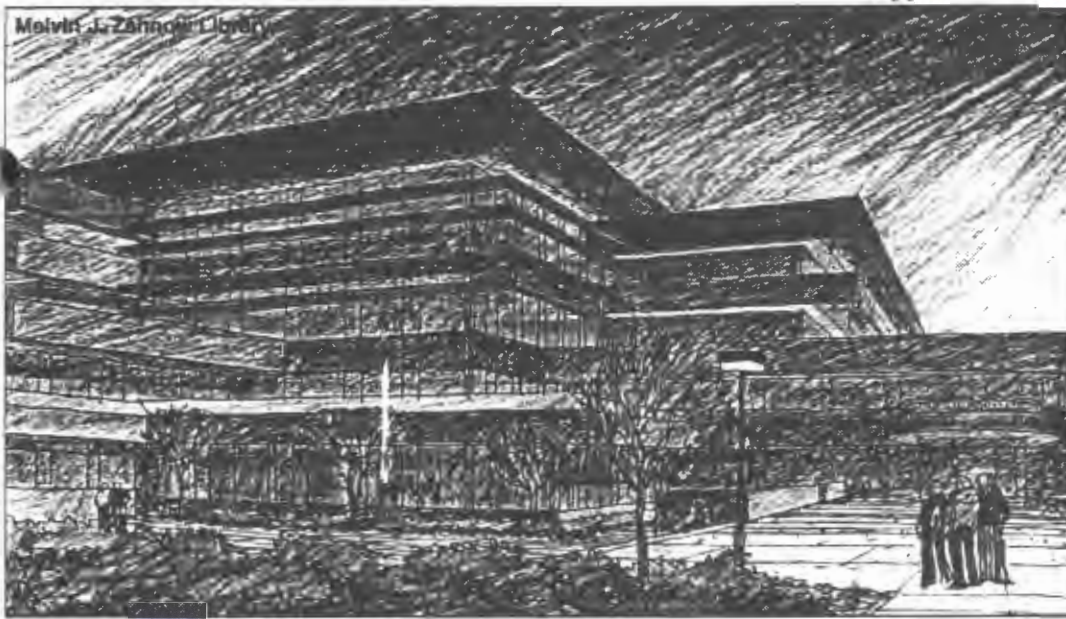
Science Building

Work is under way on renovating the existing Science Building. Some \$3.5 million in updates will be completed in time for the start of the winter 2002 semester in January. Among the changes will be new and remodeled spaces for the Biology and Physics departments, including teaching laboratories, classrooms, research laboratories and faculty offices.

Zahnow Library

Currently in progress is \$1 million in renovations to the Zahnow Library, which will take several months to complete. Construction in this facility will continue as crews prepare to add a fourth floor addition at a cost of \$10 million. The expanded library will provide more stack space for collections, group study rooms, computer technology laboratory, computer data ports for lap top users, and a host of other improvements. Library users will be able to enter the facility from both the second level and ground floor. The "main" library entrance is near the building entrance

Melvin J. Zahnow Library



at the court yard between Zahnow and Pioneer Hall. Above this building entrance will be an outdoor patio, furnished with tables for students who wish to enjoy studying outdoors in nice weather. Work on the fourth floor will begin in earnest in May 2002, with completion targeted for August 2003.

Native Plantings

Located at the corner of Pine Grove and College Drive will be a project that is being developed with grants from the Watershed Initiative Network and the US Fish and Wildlife Service. This is a demonstration project to reintroduce plants that originally grew in this area before it was settled in the 1800s. When completed, more than 50 species of plants will be added to the space, along with appropriate signage to indicate the project's purpose and content. The area will exhibit many colorful plants throughout the growing season. A pond also may be used as a skating rink during the winter months.

Parking

The University is expanding several parking lots. Approximately 290 spaces are being added to B Lot and 310 spaces to J-3 Lot. In addition, parking areas north of Arbury Fine Arts Center, Wickes Hall and Brown Hall are being redesigned. Twenty-eight spaces will be available near Arbury, with 36 spots offered near Wickes and Brown halls. The one-way service drive that had been available in this area will be replaced with a sidewalk.

directions to recommended refuge areas the event warnings are issued.

Sewer Lift Station

Located near the south side of campus, a new pump station to replace the original 30-year station will be installed in an underground, 30-foot cylinder that will send all sewage to the treatment plant in Saginaw. Equipment is on order, and work is expected to begin in mid-September. The cost of the project is \$180,000.

University Village II

The second phase of the University Village complex will bring SVSU's resident student population to 1,500. University Village II will provide an additional 280 beds for on-campus residents. The project consists of mostly townhouse-style living arrangements: four individual bedrooms, two full baths and a living/kitchen/dining area. Also included with this project are new outdoor basketball and volleyball courts, a laundry building and 280 parking spaces. Total project costs are \$10.75 million.

Utilities Extensions

Less attractive than new buildings, but very necessary, are sewer and water lines for construction of future campus facilities. Work is under way on sewer lines across D Lot, between F Lot and College Drive, and along College Drive to the site for the new Regional Education Building. In addition, water lines are being installed north of Pine Grove Apartments, and storm sewers from the Regional Education Building site to the large pond near Bay Road. Work on these utilities is expected to be completed by fall 2001 semester.

Wickes Hall

Remodeling will take place in the Academic Affairs, Cashier's, Controller's and Computer Services offices in Wickes Hall. In addition to \$170,000 in renovations, carpeting installed in the 1980s will be replaced throughout the building (75,000 square feet at a cost of \$400,000).

Wickes Circle



The new carpeting will have somewhat darker earth tone colors than the existing carpet. Workers will begin the project after bids are received and materials ordered in early August 2001. Completion is slated for the end of October or sooner. New recessed, compact fluorescent lighting fixtures will be installed throughout all the corridors in Wickes Hall on the three floors. The \$60,000 project, which soon will go out for bids, will take approximately one month to complete.

Brown Hall

New carpeting also will be added to third floor Brown Hall. Much of the 7,500 square feet of new carpet (at a cost of \$35,000) will be laid during the holiday break between fall and winter semester.

Cardinal Gymnasium

SVSU's first athletic complex will receive between \$70,000 and \$100,000 in ceiling improvements, lighting and a new public address system. The project will commence when plans and budget are finalized.

Pine Grove Apartments

Future residents in SVSU's apartments will reside in refurbished units, including new carpeting, paint, appliances, and furnishings, along with upgrades in the bath areas. Plans are in development to complete one building as a demonstration project, with the remaining units to follow in subsequent years. A detailed schedule and budget is still being considered.

Pioneer Hall

The University will spend \$70,000 to upgrade the HVAC capabilities and increase ventilation for Pioneer Hall.

Marshall Fredericks Sculpture Museum

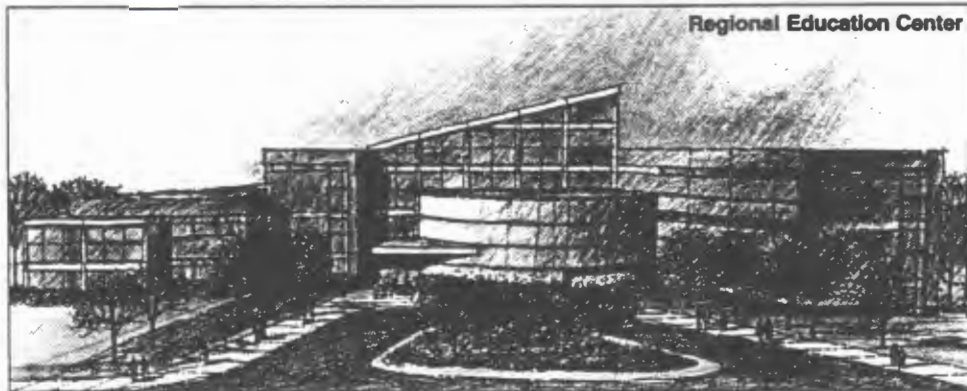
Private donors have provided \$2.5 million for an 11,000 square foot expansion of the Marshall Fredericks Sculpture Museum. New spaces will be created for temporary exhibitions of various pieces of artwork; a sculpture process studio; a classroom for use by the Museum and the University; an "Educational Court," including interactive video technology; and a display/sales area for merchandise sales, gifts and books. Also included will be remodeling of existing offices and storage areas in the Museum. The project, which is in the final design stage, will be ready for groundbreaking in early fall 2001, with completion expected sometime in fall 2002.

Maintenance Facility/Truck Port

Grounds will be housed in a new 7,400-square-foot facility. The \$550,000 building will be located near the east edge of A Lot. Currently out for bids, construction of the project will begin in August 2001, with completion expected in December 2001.

Regional Education Center (IF4)

The future Regional Education Center – "Instructional Facility No. 4" – will add 130,000 square feet and \$30 million to the University's physical plant and be the home of the College of Education. Located on the north side of College Drive and west of Pine Grove Apartments, the new facility will provide 22 new classrooms; two computer labs; a 250-seat high-tech auditorium; spaces for hosting seminars and banquets; 65 new offices for faculty; office space for the Regional Educator's Resource Center (including the Math/Science Center, Educational Resource Center and related offices); offices for the dean as well as Certification, Bilingual Programs and grant management units. Also in the plans are student lounges, food services and study areas. Still in the design stages, the project could begin construction as early as October 2001, with completion targeted for August 2003.

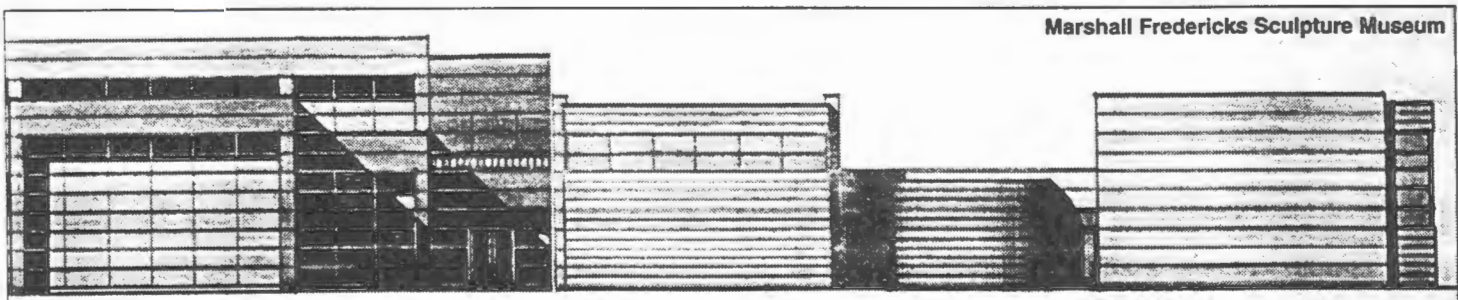


College of Education Building (Pierce Road and Tower Drive)

Renovations to accommodate new tenants in the current College of Education Building will begin in 2003 after completion of the new home for the College. Preliminary plans are to move SVSU Foundation, University Communications, and Public Safety. Portions of the building also will be used to store University records.

Regional Education Center (Macomb County)

The University is purchasing a five-acre parcel from the L'Anse Creuse School District for a Regional Education Center. The new facility, which is located on Hickey Road near Gratiot and 24 Mile, will consist of six classrooms, a computer lab and inter-



active telecommunication classroom, staff and faculty offices and student lounge/study areas. Plans call for construction to start in fall 2001, with completion expected by August 2002.

Non-motorized Pathway

A 1.5-mile, 10-foot wide paved path will run through the SVSU campus for walkers, joggers, bicyclers and rollerbladers. The path will run east of the large pond near Bay Road, starting at Freeland Road south to Pierce and east to sidewalks in the University Village II project. Intended as part of a future non-motorized pathway system that extends from Bay City to Saginaw, work on the \$264,000 project will start this fall and be completed the next spring. Funding was provided by the Michigan Department of Transportation.

Ryder Center

An expansion is being planned for Ryder Center that will accommodate a Student Recreation office and new fitness center. Presently, plans call for an addition to the south side of Ryder Center, near the stairs and along the glass-enclosed hallway. The new fitness center will offer additional space for equipment such as treadmills, stationary bicycles, weight machines, stairclimbers and more. The project is in the preliminary design stages, with groundbreaking planned for late fall 2001. Construction is expected to take about 10 months.

Campus Entrance

With the upcoming expansion of M-84 (Bay Road) to a four-lane boulevard in front of the University, the west main entrance will have a park-like setting with a new sign and other improvements. Construction on M-84 is tentatively set for 2003.

Student Center

Also in the early design stages is a 25,000 square foot addition to Doan Center that would serve as a Student Center. Included in the plans for this facility are a 10,000 square foot bookstore (the current SVSU Bookstore is 6,000 square feet); 4,500 square foot multipurpose area for dances, poster sales, large meetings and gatherings, fund drives,

etc.; a convenience store, satellite food operation/coffee bar; large recreation area equipped with video games, pool tables, foosball, table tennis, air hockey, etc.; space for aerobics; student lounges; Internet and E-mail stations; and a movie viewing area. Current plans call for construction to begin in May 2002, with completion set for August 2003.

Student Memorial

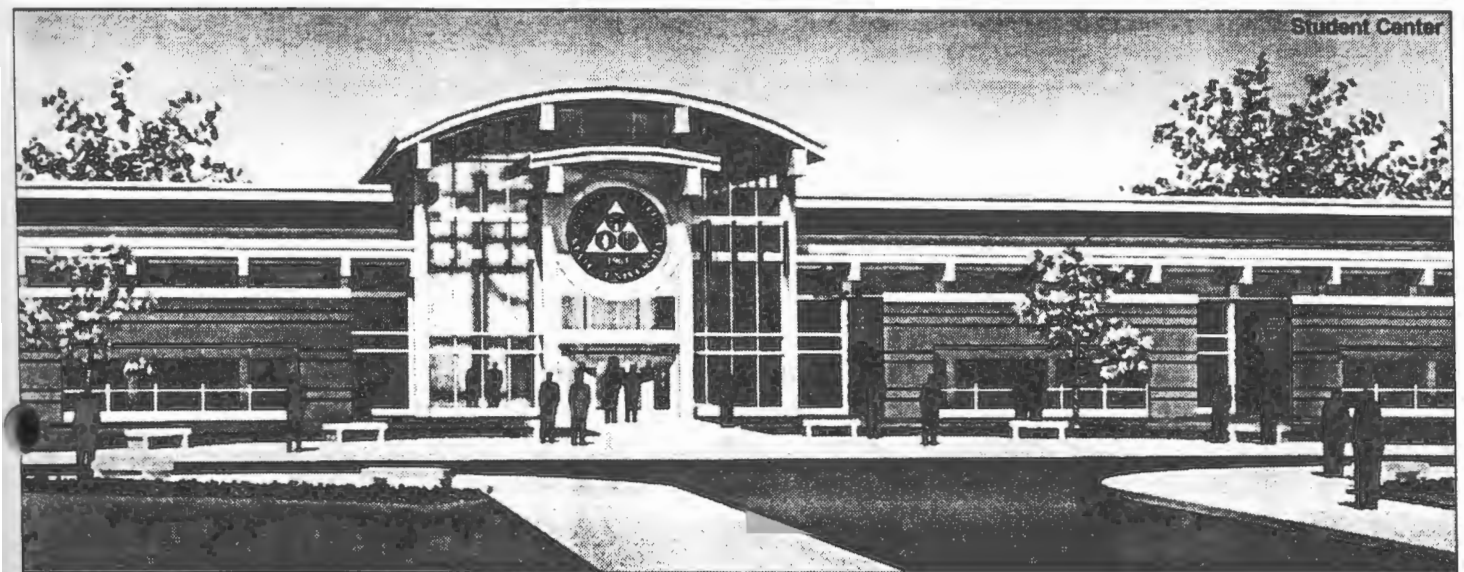
Construction on a \$200,000 Student Memorial will begin after designs are approved. The project is expected to be located in the courtyard where the Performing Arts Center joins the Arbury Fine Arts Center. Landscaping will include a shallow pond with fountains, providing an area outdoors for study, relaxation and contemplation.

"Spirit Rock"

A large, granite stone has been placed near the north entrance of the Living Center. The "Spirit Stone" weighs 6.5 tons. The stone was donated by Sargent Stone Dock. It will be painted and repainted regularly to reflect the creative energies and activities of the study body.



Student Center



Current Positions Filled

January 2001 – July 2001

ADMINISTRATIVE/PROFESSIONAL

Tamara Arizola – Hired as Mathematics Educator/Math Teacher Specialist Supervisor (new). Ms. Arizola earned her Bachelor of Arts Degree in Elementary Education from Saginaw Valley State University in 1995, and is currently pursuing her Master of Teaching in Natural Science. Prior to this position, Tamara was employed as an adjunct instructor and was Administrative Secretary/Office Coordinator, for the Office for Mathematics and Science Education at Saginaw Valley State University.

Cheri Ayayi – Hired as Administrative Secretary in the Foundation Office (replacement). Ms. Ayayi earned her Bachelor of Arts Degree in Criminal Justice from Michigan State University in 1990. Prior to joining SVSU, Ms. Ayayi was a teacher of English as a Second Language at the Oakwood English Language Institute in Annandale, Virginia.

Brian Bacigalupo – Hired as Grounds Operations Manager – Physical Plant (new). Mr. Bacigalupo earned his diploma in Data Processing as a Junior Programmer from Sanford-Brown College of St. Ann, Missouri in 1984. Prior to joining SVSU, Mr. Bacigalupo served thirteen years as General Manager for Village Green, Inc., Bay City, Michigan.

Elizabeth Blumenshine – Hired as AIS Programmer/Analyst (new). Ms. Blumenshine is currently attending Saginaw Valley State University and will earn her degree in August of 2001 with emphasis on Computer Information Systems.

Floyd Csir – Hired as Reference and Distance Education Librarian (new). Mr. Csir earned his Masters of Education Degree from Christian Brothers University, Memphis, Tennessee in 1999. Prior to joining SVSU, Mr. Csir was Interim Library Director at Christian Brothers University.

Nanette L. Fein – Hired as AIS Programmer/Analyst (new). Ms. Fein earned her Bachelor of Business Administration Degree from Northwood University, Midland, Michigan in 2001.

Devon Gilliam – Hired as Assistant Director of the Academic Advisement Center (replacement). Mr. Gilliam earned his Bachelor of Arts Degree in Criminal Justice from Saginaw Valley State University in 1998. Prior to joining SVSU, Mr. Gilliam was a Group Leader/Family Worker with the Wolverine Human Services Pioneer Work and Learn Center, Vassar, Michigan.

David M. Hunt, Ph.D. – Hired as the Harvey Randall Wickes Chair in International Business (replacement). Dr. Hunt earned his doctorate with a major in Organization Behavior & Management from the University of Houston, Houston, Texas in 1980. Prior to joining SVSU, Dr. Hunt was Professor of International & Strategic Management for the University of Southern Mississippi, Hattiesburg, Mississippi.

L. Garnet Lewis, Ph.D. – Hired as Director of Institutional Research (replacement). Dr. Lewis earned her Ph.D. in Philosophy from the University of North Texas, Denton, Texas, in 1992. Prior to joining SVSU, Dr. Lewis was employed as an Education Research Consultant with Michigan Rehabilitative Services, Michigan Department of Career Development.

Ronald C. L'Huillier – Hired as Help Desk Specialist (new). Mr. L'Huillier earned his Bachelor of Arts Degree in Computer Information Systems from Northern Michigan University, Marquette, Michigan in 2000. Prior to joining SVSU, Mr. L'Huillier's was employed by the Internet Services Company where he made significant contributions to web design.

Calvin McFarland – Hired as Assistant Director of the Academic Advisement Center (replacement). Mr. McFarland earned his Master of Science in Human Resources Degree from Central Michigan University, Mount Pleasant, Michigan in 2000. Prior to joining SVSU, Mr. McFarland was employed with SVRC/Work First.

Heather Niederquell (Pichan), CPA – Hired as Grant/Staff Accountant (new). Ms. Niederquell earned her Bachelor of Business Administration Degree at Saginaw Valley State University in 1998. Prior to joining SVSU, Ms. Niederquell was employed as Senior Accountant at Saint Mary's Mercy Medical Center, Grand Rapids, Michigan.

Andrea Ondish – Hired as Curator of Education in the Marshall Fredericks Sculpture Museum (replacement). Ms. Ondish earned her Masters of Fine Arts Degree from Indiana State University, Terre Haute, Indiana in 1992. Prior to joining SVSU, Ms. Ondish was employed as Programs and Exhibitions Coordinator, Swope Art Museum, Terre Haute, Indiana.

Alana Rabedioux – Hired as Administrative Secretary in the Foundation Office (replacement). Ms. Rabedioux earned her Bachelor of Science Degree in Business Administration from Central Michigan University, Mount Pleasant, Michigan in 1976. Prior to joining SVSU, Ms. Rabedioux was the owner of Administrative Services Company.

Christopher Schilling, Ph.D. – Hired as the Charles J. Strosacker Endowed Chair in Engineering (new). Dr. Schilling earned his Doctorate of Philosophy Degree from the University of Washington, Seattle, Washington in 1988. Prior to joining SVSU, Dr. Schilling was Associate Professor of the Materials Science & Engineering Department at Iowa State University.

Matthew Sommer - Hired as Network Analyst (new). Mr. Sommer earned his Bachelor of Science Degree in Computer Information Systems from Saginaw Valley State University in 2001. Prior to joining SVSU, Mr. Sommer was employed as a Network Technician.

William Taub – Hired as Microcomputer Analyst (new). Mr. Taub earned his Bachelor of Science Degree in Computer Science from Saginaw Valley State University in 1994. Prior to this position, Mr. Taub was employed as a Computer Systems Administrator with B & K Corporation, Saginaw, Michigan.

John Wesolek – Hired as Assistant Football Coach (replacement). Mr. Wesolek earned his Master's Degree in Exercise Physiology from Michigan State University, East Lansing, Michigan in 1997. Prior to this assignment, Mr. Wesolek was the Coordinator of Activity Courses with the College of Education and adjunct faculty.

Page 3 of 3

Jason Yaman – Hired as Sports Information and Promotions Director (replacement). Mr. Yaman earned his Master of Arts Degree in Kinesiology from the University of Michigan, Ann Arbor, Michigan in 2000. Prior to joining SVSU, Mr. Yaman worked as an Intern for the University of Michigan Sports Information.

BAY CITY TO CITY OF ZILWAUKEE ABANDONED RAIL CORRIDOR

LETTER OF COOPERATION

WHEREAS, Public Act 200 of 1957 allows municipalities to participate in an "Intermunicipality Study Committee" for the purpose of studying areas of mutual interest concern; and,

WHEREAS, Certain municipalities have identified a mutual common interest in the acquisition of the abandoned rail corridor from Bay City to the City of Zilwaukee for future establishment of a non-motorized trail facility; and,

WHEREAS, Information is needed with respect to the process of acquisition, identification of funding sources, development and operational costs, ownership, and maintenance arrangements, and methods by which the municipalities might continue to cooperate to implement such an effort;

NOW, THEREFORE, BE IT RESOLVED:

1. That the Bay City/Zilwaukee Corridor Intermunicipality Study Committee is hereby formed to study issues and prepare a report suitable for member municipalities to further consider the common interest; and,
2. That each municipality shall forthwith appoint one representative and, to act in their absence, one alternate to a Committee to engage in discussions and participate in the gathering of information; and,
3. That upon the conclusion of the study and other investigations as shall be deemed appropriate by the Committee, it shall issue a report to all signatories stating their findings as to the process of acquisition, identification of funding sources for acquisition and development, development and operational costs, ownership, and maintenance agreements, and methods by which the municipalities might continue to cooperate to implement such an effort, assuming the report shall so recommend; and
4. That the business of the Committee shall be conducted by rules as they shall adopt and shall be determined by a simple majority of those present at the meetings established to conduct the business of the group but in no event a lesser number of representatives than is the majority of all signatories hereto.

In witness whereof, we, having been duly authorized by our respective governing bodies, do hereby set our hands and seals this _____ day of _____, 2001.

Bay City to City of Zilwaukee Abandoned Rail Corridor
Letter of Cooperation
Page 2

City of Bay City

Saginaw County

Frankenlust Township

Michigan Department of Natural Resources

Zilwaukee Township

Kochville Township

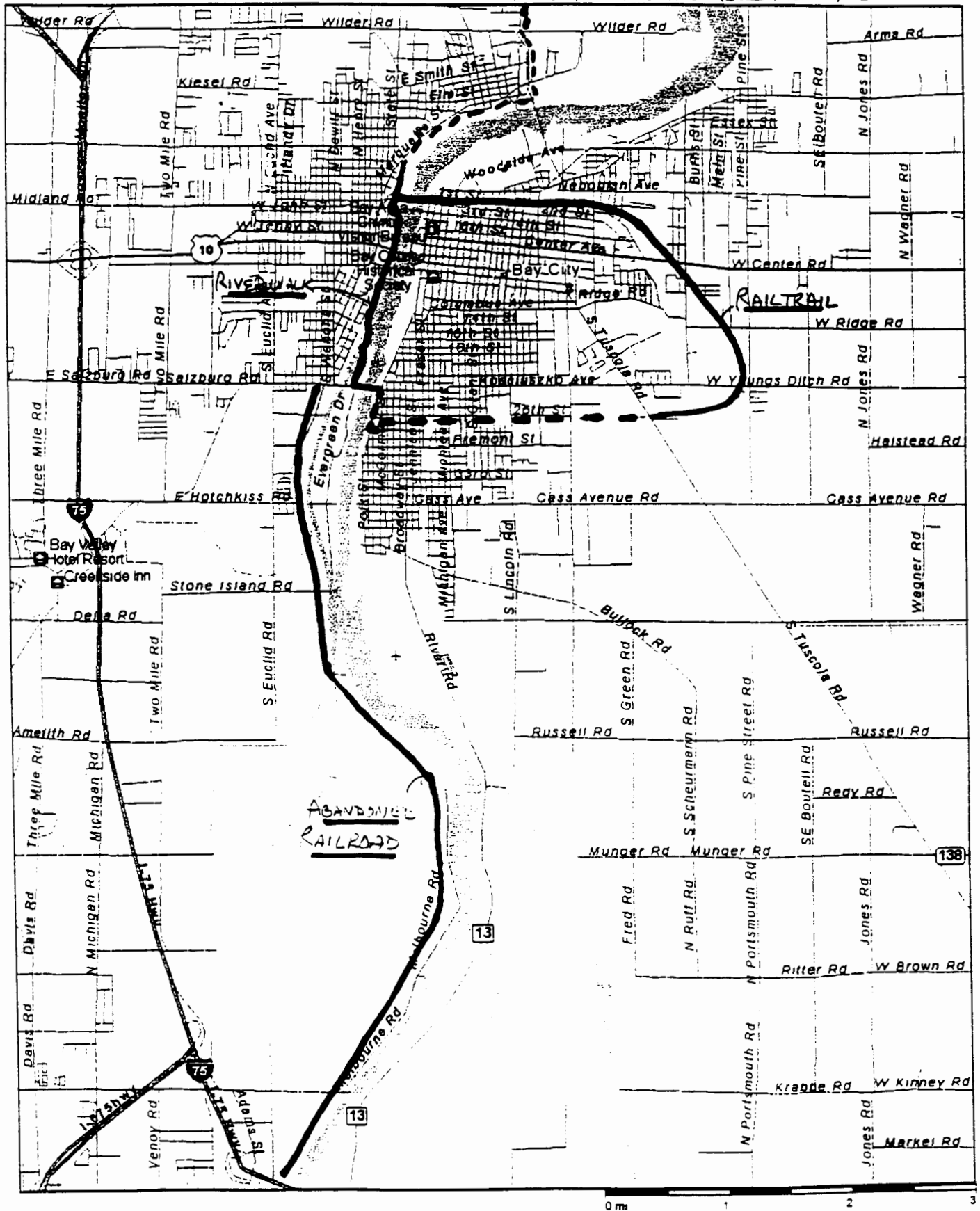
City of Zilwaukee

Carrollton Township

Bay County

Saginaw Valley State University

TO BAY CITY STATE RECREATION AREA



Streets Plus