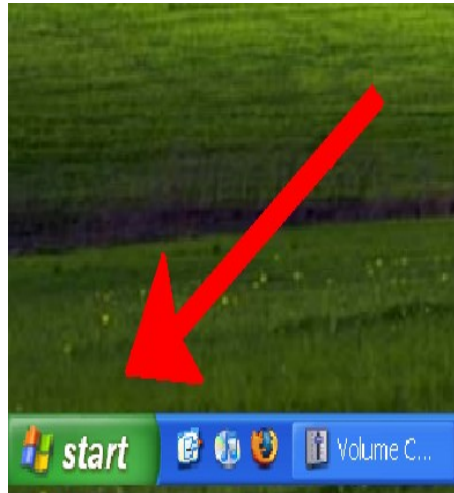
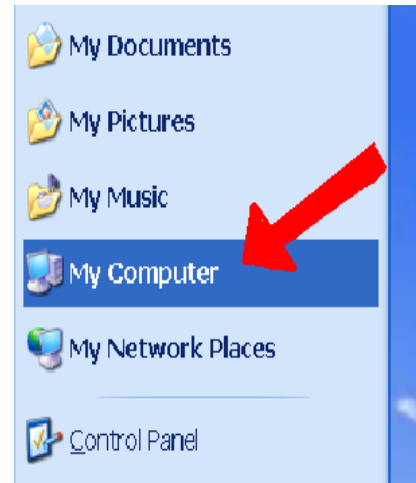


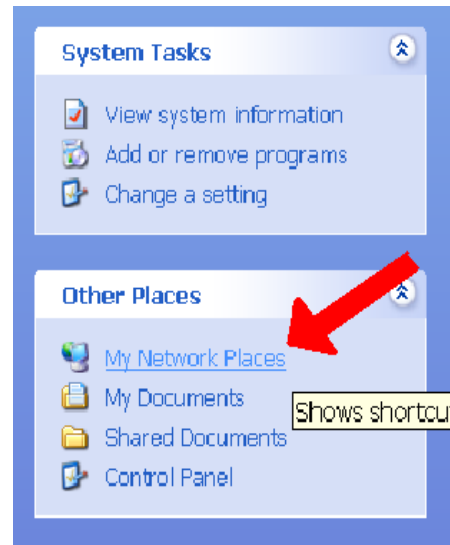
Windows XP M-Drive Setup



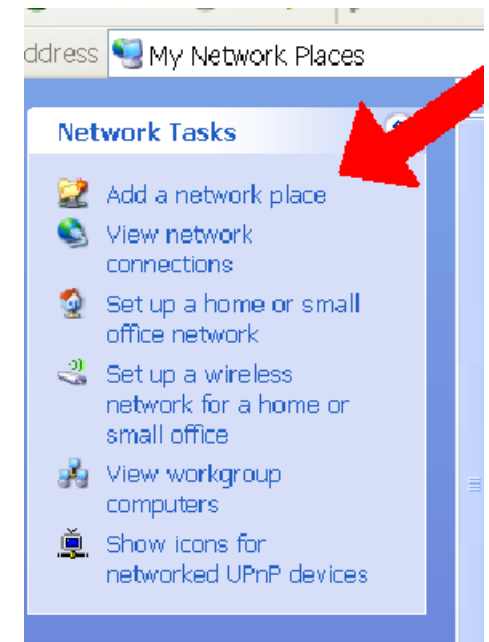
“Start”



“My Computer”



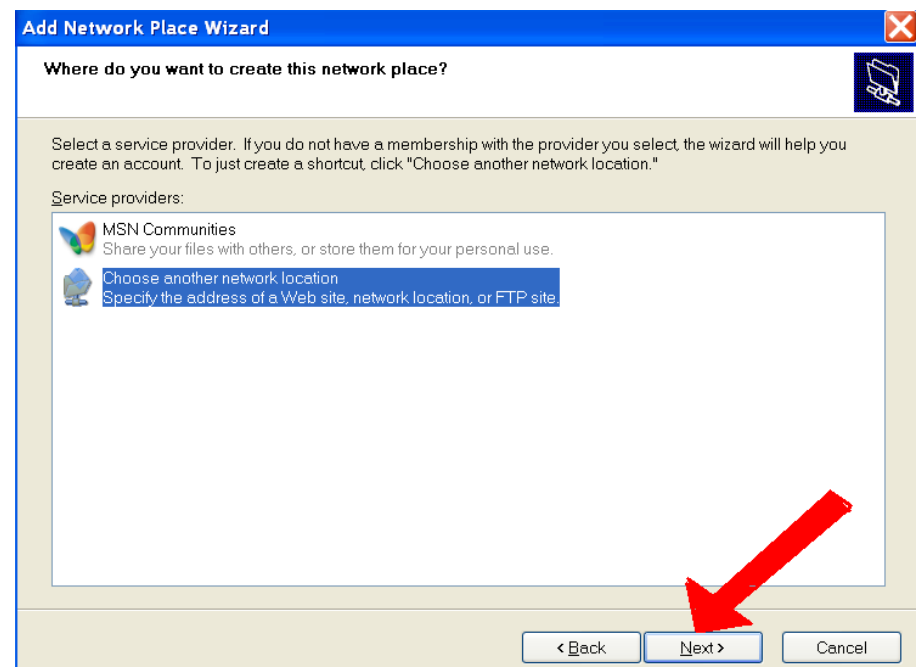
“My Network Places”



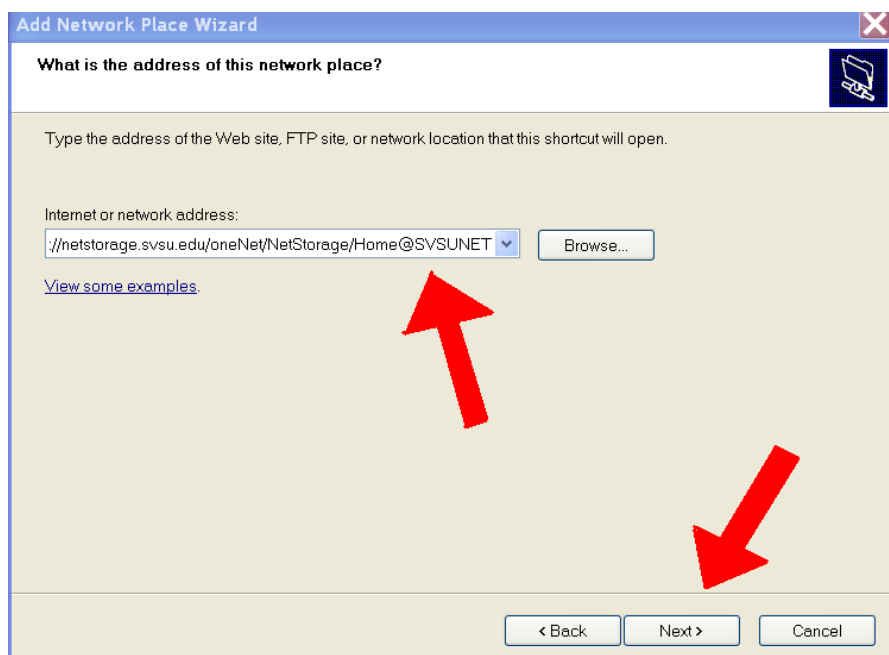
“Add a Network Place”



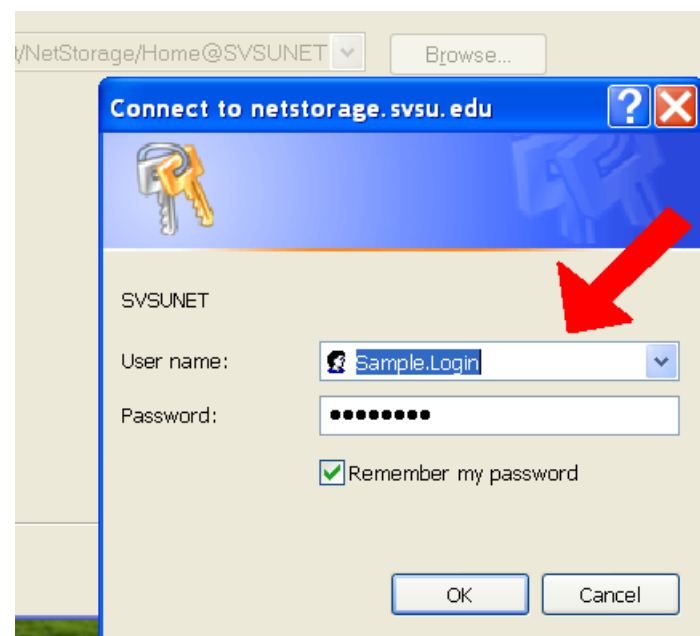
“Next”



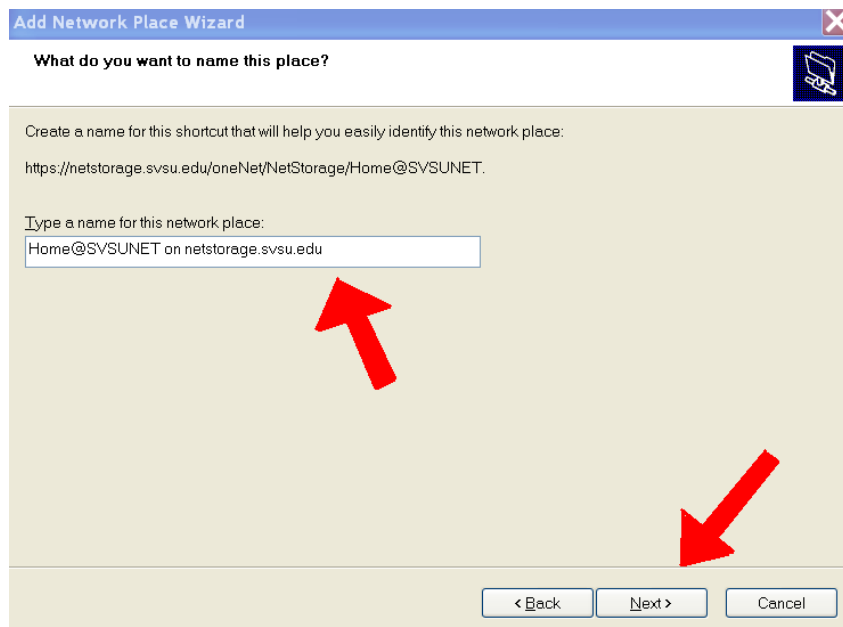
Select “Choose another network location”



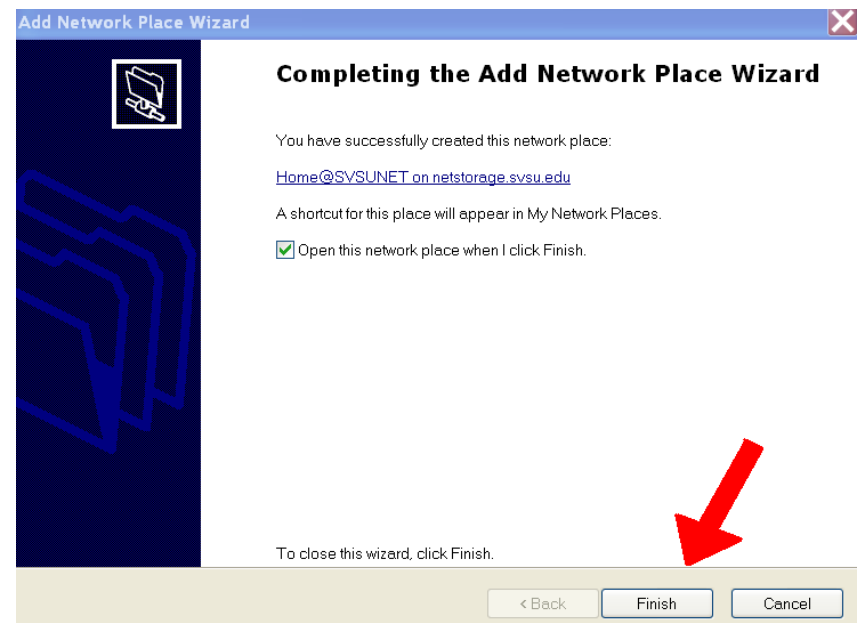
Type in the box
“https://netstorage.svsu.edu/oneNet/NetStorage/Home@SVSUNET”



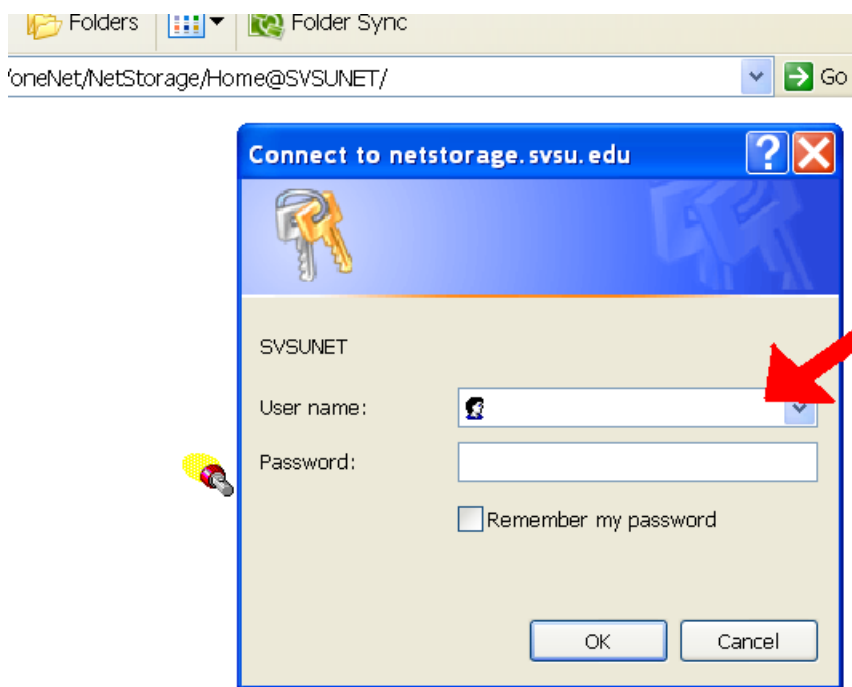
Login using your SVSU user name



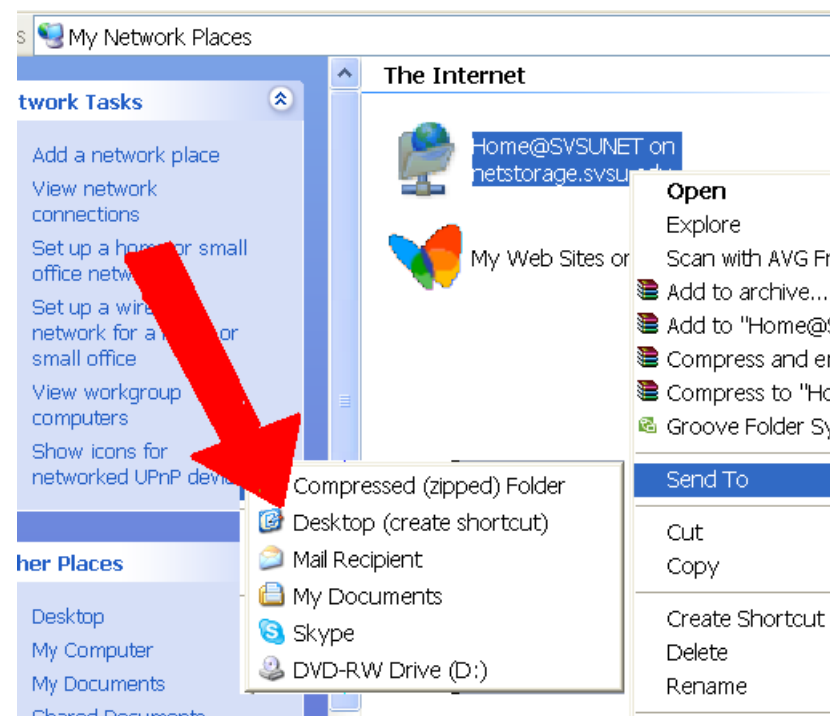
Type a name for your M-Drive Network (or leave it as default)



Selected Finish



Enter login information (only if "remember my password" was not selected)



To Add Shortcut to your desktop, Go Back to "My Network Places", right click on the Network Icon and select "Send To", followed by "Desktop (Create Shortcut)



Shortcut is now added. M-Drive can now be accessed from your desktop.