

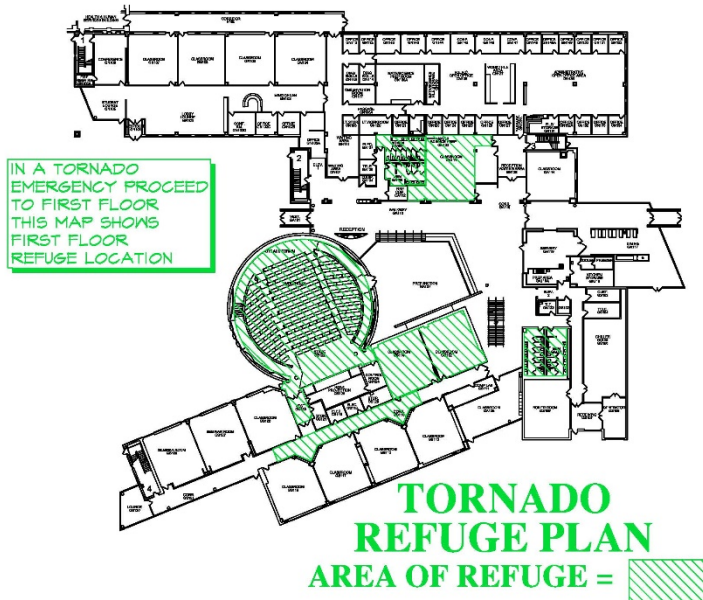
SVSU Emergency Planning

– How you can help!



Campus Safety & Knowing What To Do In a Crisis

- [SVSU Police Department](#) & [Environmental Health & Safety Office](#) ensures **campus safety** through providing programs, services and education to faculty, staff and students.
- **Emergency procedure protocols** are instituted, communicated and exercised in circumstances of crisis.
- A variety of **emergency notification strategies** and systems are used to quickly alert the community of incidents and safety, security and crime prevention programs are readily available to heighten awareness and ensure SVSU continues as a safe campus.
- In an emergency situation, **everyone must be prepared** to take whatever actions necessary to protect, not only themselves, but also fellow students or co-workers until the arrival of police officers or emergency personnel.



Environmental Health & Safety Website

<http://www.svsu.edu/campusfacilities/ehs/>



SVSU / Campus Facilities / Environmental Health & Safety

Campus Facilities

- Facility Operations
- Planning & Construction
- Environmental Health & Safety
- Sustainability & Energy Management
- Service Request
- Key Request
- Vehicle Request
- Directions to Campus Facilities
- Staff

Contact Us

✉ cfsupport@svsu.edu
☎ (989) 964-4080 (24/7)
📠 (989) 964-4096

Planning & Construction
(989) 964-4074

Motor Pool



Environmental Health & Safety

Policies & Procedures

We follow the latest policies and procedures to maintain a healthy and safe environment for students, employees and visitors. More information can be found within the links on the right.

Standards

We ensure the highest state of environmental health & safety standards are upheld throughout campus, both in the workplace and classrooms. For more information on Michigan Occupational Safety and Health Administration (MIOSHA) standards view the links below.

- [General Industry Safety & Health Standards](#)
- [Construction Safety & Health Standards](#)
- [Administrative Standards for all Industries](#)
- [Sample Written Plans \(105kB\)](#)

Safety Suggestion

PDF DOCUMENT

Got Safety?

HELPFUL LINKS

Bicycle Safety

PDF DOCUMENT

Policies & Procedures

Fire Drill

EVACUATION PROCEDURES
PDF

Health/Safety Policy

OPERATIONS MANUAL

Incident/Injury

REPORTING PROCESS

Bloodborne Disease

PDF DOCUMENT

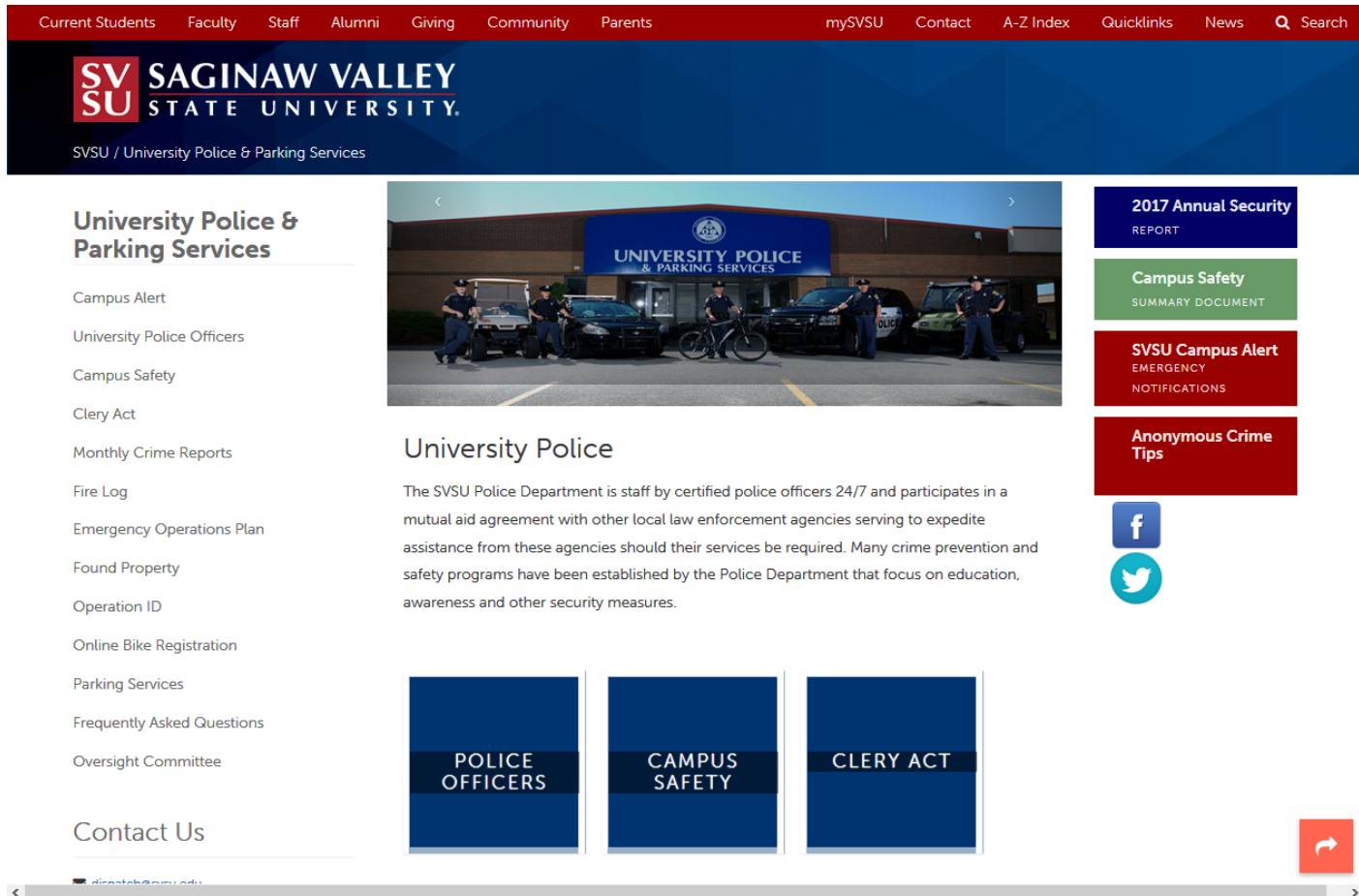
Self-Inspection

CHECKLIST



University Police Website

<http://www.svsu.edu/universitypolice/>



The screenshot shows the University Police website interface. At the top is a red navigation bar with links: Current Students, Faculty, Staff, Alumni, Giving, Community, Parents, mySVSU, Contact, A-Z Index, Quicklinks, News, and Search. Below this is a dark blue header with the SVSU logo and the text 'SAGINAW VALLEY STATE UNIVERSITY.' and 'SVSU / University Police & Parking Services'. The main content area features a large photo of police officers in front of a building labeled 'UNIVERSITY POLICE & PARKING SERVICES'. To the left is a sidebar menu with links: University Police & Parking Services, Campus Alert, University Police Officers, Campus Safety, Clery Act, Monthly Crime Reports, Fire Log, Emergency Operations Plan, Found Property, Operation ID, Online Bike Registration, Parking Services, Frequently Asked Questions, and Oversight Committee. Below the menu is a 'Contact Us' section. The main content area has a heading 'University Police' followed by a paragraph: 'The SVSU Police Department is staff by certified police officers 24/7 and participates in a mutual aid agreement with other local law enforcement agencies serving to expedite assistance from these agencies should their services be required. Many crime prevention and safety programs have been established by the Police Department that focus on education, awareness and other security measures.' Below this are three blue boxes labeled 'POLICE OFFICERS', 'CAMPUS SAFETY', and 'CLERY ACT'. On the right side, there are four red and green buttons: '2017 Annual Security REPORT', 'Campus Safety SUMMARY DOCUMENT', 'SVSU Campus Alert EMERGENCY NOTIFICATIONS', and 'Anonymous Crime Tips'. At the bottom right are social media icons for Facebook and Twitter, and a red share button. The browser address bar at the bottom shows 'dianateh@svsu.edu'.

Go to [SVSU Campus Alert & Register](#)

- **SVSU Campus Alert** is an emergency notification system which **delivers messages** to *SVSU email accounts, personal email addresses, land lines and mobile phones*.
- The SVSU Campus Alert system is used to report any critical incidents, severe weather threats or campus delays/closures due to inclement weather.

SVSU SAGINAW VALLEY STATE UNIVERSITY
SVSU / University Police & Parking Services / Campus Alert

University Police & Parking Services

- Campus Alert
 - SVSU Campus Alert Login
- University Police Officers
- Campus Safety
- Clery Act
- Monthly Crime Reports
- Fire Log
- Emergency Operations Plan
- Found Property
- Operation ID
- Online Bike Registration
- Parking Services
- Frequently Asked Questions
- Oversight Committee

SVSU Campus Alert

Emergency Notification System (ENS) Registration & Contact Information Maintenance

Saginaw Valley State University has partnered with *Rave Mobile Safety* to provide an emergency notification system capable of delivering messages to SVSU email accounts, personal email addresses, land lines and mobile phones.

The SVSU Campus Alert system will be used to report any critical incidents, severe weather threats or campus delays/closures due to inclement weather.

ALL students, faculty, adjunct faculty and employees (including ARAMARK and Barnes & Noble employees) are automatically enrolled in this alert system with their SVSU email address. However, individuals are strongly encouraged to enable as many contact methods as possible beyond the SVSU email notification to increase the likelihood of receiving a given broadcast alert message. This enables SVSU to provide notification of a reportable critical incident to the entire campus community and assists with maintaining Clery Act compliance.

Individuals may register up to:

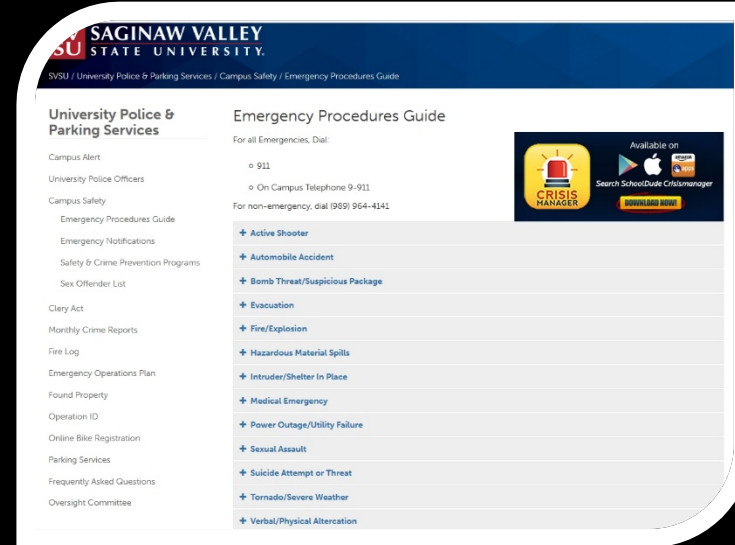
- Two (2) additional email accounts
- Three (3) mobile phone numbers (NOTE: Mobile service plans may charge for the delivery of text messages.)
- Three (3) voice only phone numbers

Campus Alert
LOG IN/REGISTER

Contact Us

Emergency Contact

- For any emergency situation **dial 911** from a cell phone or **9-911** from a campus phone.
- The **SVSU Police Department** is staffed by **certified police officers 24/7** and participates in a mutual aid agreement with other local law enforcement agencies serving to expedite assistance from these agencies should their services be required.
- **In an emergency situation, you must be prepared to take whatever actions necessary to protect, not only yourself, but also fellow students or co-workers until the arrival of police officers or emergency personnel.** As such, review the [Emergency Procedures Guide](#) for information in responding to certain emergencies.
- For your readiness the guide is available as an app & may be downloaded for free!

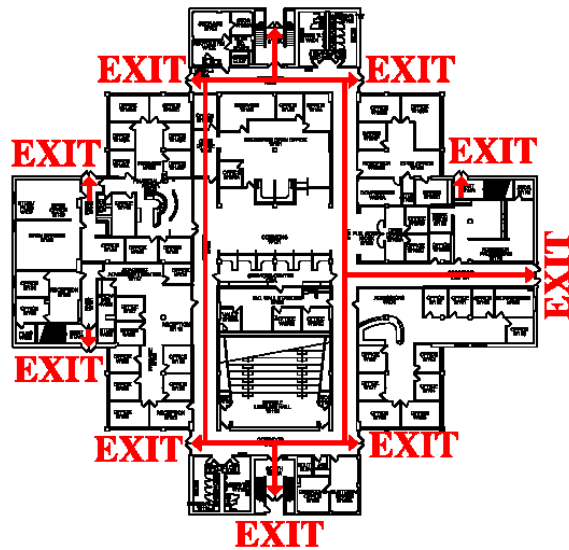


Emergency Procedures Guide *available via mobile app – SchoolDude Crisis Manager*

- [Active Shooter](#)
- Automobile Accident
- Bomb Threat/Suspicious Package
- [Evacuation](#)
- Fire/Explosion
- Hazardous Material Spills
- Intruder/Shelter In Place
- Medical Emergency
- Power Outage/Utility Failure
- Sexual Assault
- Suicide Attempt or Threat
- Tornado/Severe Weather
- Verbal/Physical Altercation



What YOU can do to make SVSU more prepared in times of a crisis?



FIRE EXIT PLAN

1. Sign-up & Register for [SVSU Campus Alert](#)
2. Download & Install [CrisisManager App](#) on your Mobile Device
 - It's free! And loaded with cool stuff!
3. **Really get to know your work area**
 - Emergency Evacuation Procedure
 - Evacuation Routes/Exit Options (at least two)
 - Areas of Assembly
 - Areas of Refuge
 - Location of alarms-pull stations
 - Fire extinguishers
 - Practice exiting your work area – at least twice a year
 - Time how long it would take you to exit the building? Has the exit been blocked? Are the doors working?
4. Encourage other faculty, staff and students to do the same

For more information:

Leo Mioduszewski, Chief of University Police

lmiodusz@svsu.edu

(989) 964-4285

OR

Bob Tutsock, Director, Environmental Health & Safety

tutsock@svsu.edu

(989) 964-4082

THANK YOU!

Questions, Comments, Suggestions?